



ALISON HANDLING

REUSABLE STORAGE SOLUTIONS

www.alisonhandling.com

☎ 01772 687 940



PRODUCT CATALOGUE

EDITION 4



About Alison Handling

Welcome to Alison Handling.

We are the UK's largest independent stockist of new plastic storage containers, plastic boxes, plastic trays, plastic skips, plastic totes, plastic pallets and plastic pallet boxes. At Alison Handling, we are proud of our reputation for the right product, at the right price, at the right time, promptly delivered from stock, coupled with an enviable level of customer service. Alison Handling is also environmentally responsible, and all our plastic storage solutions are fully recyclable.

Established in 1988, Alison Handling was a family business, named after the daughter of the founders Tony and Andrea Dearden. The company was sold to the PPS Group in 2016 and we continue to run our business with those core family values. Our UK warehouses are centrally located in Kirkham near Preston, close to the M6 motorway, for easy nationwide accessibility to facilitate prompt, reliable delivery of your plastic storage boxes from stock.

We supply our plastic storage solutions to many household names including Matalan, Wm Morrisons, Tesco, Sainsburys, Northern Foods, Premier Food Group, Nestle, Weetabix, KP Foods, Del Monte, Allied Bakeries, 2 Sisters Food Group, House of Fraser, British Gas, Procter & Gamble, Unilever, Royal Bank of Scotland and Fujitsu, to name a few.

We support a great deal of local businesses throughout the county of Lancashire too.

Many of our valued customers have been trading with Alison Handling for over 20 years, a real testament to our business ethics and customer service teams. Our quality plastic storage boxes are ideal for both industrial and domestic use.

Whether you require large plastic containers for commercial bulk storage; stack & nest space saving plastic containers to maximise storage; small parts storage boxes; plastic pallets and wheeled dollies for ease of movement, Alison Handling is the company that can help you. Our plastic containers are available in Food Grade or Non-Food Grade, and all our products have the versatility for use in Food Processing, Catering and Hospitality, Horticulture, Entertainment, Manufacturing, Retail, Waste Management and Recycling, Healthcare and Education.

In our Warehouses, we have an extensive range of plastic storage boxes covering size, strength, colour, security seals, ventilation, ability to nest / collapse to save space, lidded or open top. Our wheeled Dollies are compatible with our containers. Choosing the right plastic storage box can be complicated. You can rely on Alison Handling's specialist knowledge and experience to advise you on the most cost effective, efficient storage solution.

As independent suppliers, stocking plastic boxes from all the leading manufacturers across the world, we are able to source the best plastic storage solution for your needs in terms of value, convenience and practicality. Alison Handling will also buy

back your used plastic boxes, crates, totes and pallets, as we have some customers who wish to purchase used products.

Why choose Alison Handling?

Extensive stock holding of products, solution and customer service driven.

Experienced customer services/sales team, with several members having over 25 years industry experience.

Competitive price with NO MINIMUM ORDER VALUE - discounts available on larger quantities.

Extensive range of products in all colours and sizes immediately available from stock.

Prompt delivery – we can despatch most items from stock the same day for next day if requested.

Full Track and Trace facilities on your deliveries.

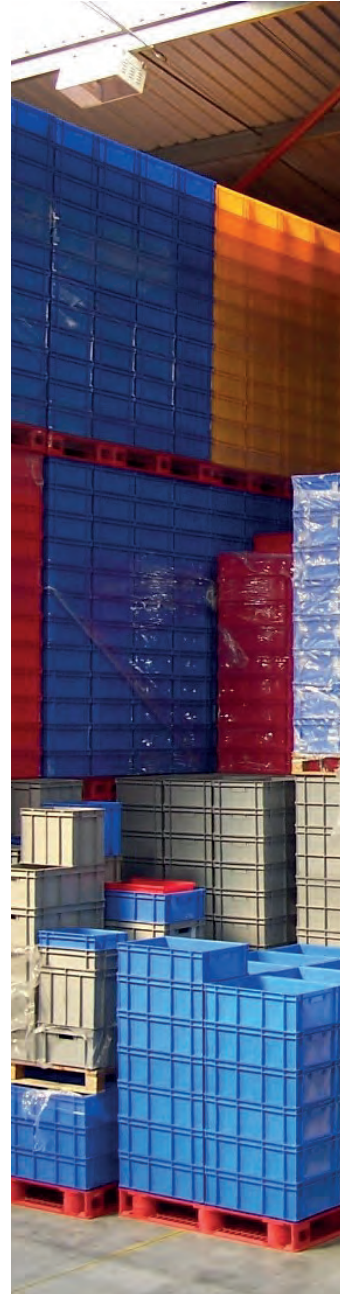
Health & Safety Compliance – we can help your company improve Health & Safety, with our range of wheeled dollies and plastic pallets available for the easy movement of your plastic storage solutions.

Environmentally friendly – all our plastic boxes are fully recyclable and over 90% are produced from recycled materials. Being long lasting, reusable, plastic recyclable boxes are kinder to the environment than less durable cardboard alternatives going to landfill.

We work with all the leading manufacturers both in the UK and overseas.

Contents

Environmental Commitments	04	Pallet Boxes	
Used/Buy Backs		Dolavs	47
Stock Holdings		AHPB Pallet Box	48
24 Hour Delivery	05	Pallet Boxes	49
New Printer		Folding Pallet Boxes	50
Site Visits/GW Containers	06	Bulk Handling Equipment	51
PPS Group	07		
Charities		Insulated Boxes	
		Insulated Boxes	53 - 55
Euro Stackers		Pallets	
Euro Stackers	09 - 14	Light & Medium Duty Pallets	57
Recycled Stackers	15 - 16	Heavy Duty Pallets	58
Uni Boxes	17	Rotationally Moulded Pallets	59
Lidded Boxes		Environmental	
Lidded Boxes	19 - 20	Spill Trays & Pallets	61
Recycled Lidded Boxes	21	Wheelie Bins	62
Hinged Lidded Containers	22	Litter Bins / Grit Bins	63
Stack/Boxes		Parts Bins	
Bail Arm Crates	25	Parts Bins	65
Swing Bar Crates	26	Recycled Parts Bins	66
180° Stack/Nest	27	Louvred Panels	67
Heavy Duty 180° Stack/Nest	28		
Fish Boxes	29	Plastic Shelving & Lockers	
Bakery		Tables / Racks / Benches	69
Bread Baskets	31	Plastic Racking	70
Confectionery Trays	32 - 33	Lockers	71
Ingredients Storage	34	Wardrobes & Cupboards	72-73
Inter Stacking Bins/ Tapered Bins	35	Metal Work	
Ingredient Storage Mobiles	36	Roll Cages	75
Racks	37	Hypacages	76
Mobiles		Metal Dollies	77
Mobile Trucks	39	Platform Trucks	78
Recycled Eco Trucks	40	Steps	79
Bar Trucks & Mobiles	41	Index - Product Codes	80 - 81
Dollies		Technical Specification	82 - 83
Alison A-Link Dolly	43		
Dollies	44 - 45		



Reducing - Reusing - Recycling - Progressing

Sustainability

All our UK manufactured products use the latest industry standard and environmental management systems in accordance with current UK legislation. Just about all our waste streams are being recycled. We offer a full range of recycled products.

Further energy efficiency will be achieved through new technologies and education of our workforce. Through continuous investments in more efficient machinery and practices, we are very proud of our low levels of wastage and are continuously looking to improve this further.

For many years now we have taken our responsibilities to the environment very seriously and are proud of our progress to date.

Energy

Alison Handling have made huge improvements in energy efficiency in recent years through the introduction of new technology and equipment.

New LED Lighting is planned to be installed during 2019. We will also be purchasing new Electric Fork Lifts Truck during 2019, this will replace our diesel trucks for a cleaner more efficient environment

Customer Commitment

Our customers can be assured that we are not resting on our laurels and we are constantly keeping abreast of new developments that affect areas such as; waste management, recycling and pollution.



We Buy Back your Used Products

Did you know that Alison Handling will purchase your Used Products back from you, this unique offering within our Industry is a really positive environmental option and we support many businesses in disposing of their used stock.

Why not turn your used products back into Cash, contact our Customer Services

Team today, to see what we can do for you? We inspect all our used products to ensure they are of reasonable quality, safe and legal.

We have many customers requesting daily for our Used Products, so there is always plenty of demand.



Stock Holdings



Alison Handling hold one of the largest stocks of new and used plastic recyclable products in the UK at our 2.5-acre site in Kirkham near Preston, Lancashire.

With over 300,000 products available immediately for despatch in all sizes and colours.

Our extensive range of products include:

- Stacking Boxes
- Lidded Boxes
- Euro Stacking Boxes

- Bakery Trays, Bins and Racks
- Mobile Trucks and Bins
- Dollies that interact with our Box Range.
- Pallet Boxes
- Insulated Boxes
- Pallets
- Parts Bins
- Plastic Racking, Lockers and Cupboards.
- Environmentally friendly Spill Trays, Wheelie Bins and Grit Bins.
- Metal products including Roll Cages, Hyper Cages, Dollies and Platform Trucks.



Customer Deliveries with Track and Trace

With our On-Time Delivery performance at 98%, we will ensure you get your products on time.

Our Transport provider has full Track and Trace facilities which give our Customer Service Team immediate access to track your delivery for you.

We deliver all across the UK and Ireland every day, we also deliver into Europe. We can issue you with a POD (Proof of

Delivery). Small orders can be sent via our Parcel Service.

For larger orders, we will look at holding stock for you throughout the year, this way you can request an immediate call-off for next day delivery if required.

We also have our Transit Vehicle for supporting local deliveries – keep an eye out for our Bright Red Alison Transit.



New Printer

Alison Handling has invested significantly into the latest printing technology with the purchase of a Coditherm H-Pad Thermal Transfer Printing Machine.

This new service to our customers will help improve lead times and makes it suitable for printing on a wide variety of our containers including: -

- Externally structured Food Grade & Non-Food Grade boxes
- Folding and Stackable Containers
- Industrial Containers
- Baskets and Trays

The printer is specifically designed for printing text, logos and variable codes in recessed areas, the Printer is

dimensioned to operate in recesses up to 25mm deep. With the ability to print variable data, thereby giving a great advantage for automatic identification and traceability.

The high impression force contributes to flattening the plastic surface during printing, giving faster production, more accurate and high-quality print. The printer has a high pad printing temperature, enabling high quality print on both PE and PP plastic containers.

Contact a member of our Customer Service team to discuss your Product Personalisation requirements.



Site Visits

At Alison Handling we want to give our customers great customer service, to support this, we offer a member of our team to come and visit your site to discuss your storage requirements.

With over 30 years in the Industry, we feel we are the go-to company to ensure you receive the best advice on your products and storage solutions. We can give you a detailed quotation and a product specification.

With our new in-house Printing facility, we can personalise your products for you. We offer all our clients a very personal service, whether you wish to visit our Site, or you would like us to come and see you. It does not matter where you are in the UK, a member of our team would welcome the opportunity to come and visit you.

We can also supply you with samples if you would like to try our products, just ask a member of our customer services team.



Alison Handling/GW Containers



Alison Handling also owns another company GW Containers. This is a specialist container company selling Saeplast Insulated Containers, with us having sole distributor exclusivity in the UK. The business also sells Plastic Boxes, Pallets and Baskets.

With over 35 years knowledge and experience predominantly in the Fishing Industry, GW Containers is the market leader for fish boxes and insulated containers.

As well as our long-established history in the Fishing Sector, we are fast becoming a leading supplier to the Meat, Vegetable, By-Products, Automotive and Recycling Sectors. This has recently become more evident as companies focus on reducing waste and improving their environmental credentials.



Alison Handling is proud to be part of the PPS Group of Companies. PPS Midlands was established over 10 years ago to Rent, Wash and manage Returnable Transit Equipment, using their expertise, they have since expanded to offer a full range of services including Sales, Repairs and Equipment Pooling.

Our large site in Staffordshire is equipped with a modern state of the art wash facility, where we can wash all types of returnable equipment. The twin track high pressure wash line can accommodate trays, crates and tote boxes of varying size. We also have a dedicated pallet washing machine and bulk bin washing facility.

Accredited to BRC in Storage and Distribution, PPS Midlands operates a strict hygiene program including swab tests which are carried out regularly throughout the day to ensure cleanliness. All equipment is then shrink-wrapped after washing before being returned to the customer ready for use. PPS also have a separate facility to wash equipment from a variety of industry sectors including Retail, Automotive and Electronics.

At PPS, they pride themselves in providing a hygienic and cost-effective wash service for all their customers State-of-the-art Box Drying Facility - at PPS Midlands they

have invested in a box drying facility allowing them to dry all types of equipment if required. This is particularly important for customers who require the boxes to be dry before putting their produce in to prevent damage and contamination.

PPS Midlands is situated in Marchington, Uttoxeter, Staffordshire. This central location offers easy access to the Midlands motorway network providing transport links to the whole country. This allows them to wash returnable equipment for a variety of industries including poultry, produce, automotive and retail, no matter where they are located.



Charities

Alison Handling supporting Donna's Dream House Charity

Donna's Dream House is a holiday home for children with life-threatening or terminal illnesses, situated in the heart of the town, on Chapel Street, Blackpool. Once a derelict hotel which was volunteered by the Council for a peppercorn rent, is now a haven by which any child would be overwhelmed.

The keys were handed over on Len and Barbara's 35th wedding anniversary, which the couple found particularly moving. Most of the facilities of the house have been donated and many local businesses, hoteliers, nightclub

owners, café proprietors, shopkeepers and well-meaning individuals provide help wherever possible, including much-needed cash which helps with the ongoing running costs of the house.

As Donna's Dream House is operated primarily by volunteers, the administration cost is about 2% to cover legal requirements. See their details on the Charity Commission website. So 98p of each pound raised is used to provide the holidays and accommodation costs plus related support work.





Euro Stackers

Our plastic storage boxes are ideal for warehouse storage, which is why they are used in most major industries. Our boxes are made from robust polypropylene so that even when burdened with heavy loads, they are guaranteed to stay strong. Featuring hand grips for easy manual handling, our storage boxes stack neatly and securely to make transport both safe and straightforward.

Their sleek, smooth design means they are easy to clean, making them perfectly suited to food storage, as well as engineering, electronics, textiles, storage and transportation industries. With a range of colours and sizes available, we have got something to suit every need.

We also have a range of Dollies which take our Euro Stacker products.



LA1347 - SK43120S

Solid - 9 Ltrs
 Ext: 400 x 300 x 120mm
 Int: 354 x 254 x 107mm
 Colour Available: ●
 Material: Polypropylene
 Pallet Quantity: 150
 Dolly: AHDOL-03



LA1321 - SK43120S

Solid - 9 Ltrs
 Ext: 400 x 300 x 120mm
 Int: 354 x 254 x 107mm
 Colour Available: ●
 Material: Polypropylene
 Pallet Quantity: 150
 Dolly: AHDOL-03



LA1246 - SK43175S

Solid - 15 Ltrs
 Ext: 400 X 300 x 175mm
 Int: 354 x 254 x 162mm
 Colour Available: ●
 Material: Polypropylene
 Pallet Quantity: 100
 Dolly: AHDOL-03



LA1247 - SK43175S

Solid - 15 Ltrs
 Ext: 400 X 300 x 175mm
 Int: 354 x 254 x 162mm
 Colour Available: ●
 Material: Polypropylene
 Pallet Quantity: 100
 Dolly: AHDOL-03



LA1248 - SK43175S

Solid - 15 Ltrs
 Ext: 400 X 300 x 175mm
 Int: 354 x 254 x 162mm
 Colour Available: ●
 Material: Polypropylene
 Pallet Quantity: 100
 Dolly: AHDOL-03



LA1250 - SK43235S

Solid - 20 Ltrs
 Ext: 400 X 300 x 235mm
 Int: 354 x 254 x 222mm
 Colour Available: ●
 Material: Polypropylene
 Pallet Quantity: 80
 Dolly: AHDOL-03



LA1251 - SK43235S

Solid - 20 Ltrs
 Ext: 400 X 300 x 235mm
 Int: 354 x 254 x 222mm
 Colour Available: ●
 Material: Polypropylene
 Pallet Quantity: 80
 Dolly: AHDOL-03



LA1252 - SK43235S

Solid - 20 Ltrs
 Ext: 400 X 300 x 235mm
 Int: 354 x 254 x 222mm
 Colour Available: ●
 Material: Polypropylene
 Pallet Quantity: 80
 Dolly: AHDOL-03

Euro Stackers



LA1230 - SK64075S

Solid - 12 Ltrs
Ext: 600 x 400 x 75mm
Int: 556 x 356 x 62mm
Colour Available: ●
Material: Polypropylene
Pallet Quantity: 125
Dolly: AHDOL-03



LA1169 - SK64075P

Perforated - 12 Ltrs
Ext: 600 x 400 x 75mm
Int: 556 x 356 x 62mm
Colour Available: ●
Material: Polypropylene
Pallet Quantity: 125
Dolly: AHDOL-03



LA1170 - SK64075P

Perforated - 12 Ltrs
Ext: 600 x 400 x 75mm
Int: 556 x 356 x 62mm
Colour Available: ●
Material: Polypropylene
Pallet Quantity: 125
Dolly: AHDOL-03



LA1198 - SK64120S

Solid - 23 Ltrs
Ext: 600 x 400 x 120mm
Int: 556 x 356 x 107mm
Colour Available: ●
Material: Polypropylene
Pallet Quantity: 75
Dolly: AHDOL-03



LA1195 - SK64120S

Solid - 23 Ltrs
Ext: 600 x 400 x 120mm
Int: 556 x 356 x 107mm
Colour Available: ●
Material: Polypropylene
Pallet Quantity: 75
Dolly: AHDOL-03



LA1186 - SK64120S

Solid - 23 Ltrs
Ext: 600 x 400 x 120mm
Int: 556 x 356 x 107mm
Colour Available: ●
Material: Polypropylene
Pallet Quantity: 75
Dolly: AHDOL-03



LA1343 - SK64120P

Perforated - 23 Ltrs
Ext: 600 x 400 x 120mm
Int: 556 x 356 x 107mm
Colour Available: ●
Material: Polypropylene
Pallet Quantity: 75
Dolly: AHDOL-03



LA1231 - SK64120P

Perforated - 23 Ltrs
Ext: 600 x 400 x 120mm
Int: 556 x 356 x 107mm
Colour Available: ●
Material: Polypropylene
Pallet Quantity: 75
Dolly: AHDOL-03



LA1335 - SK64120P

Perforated - 23 Ltrs
Ext: 600 x 400 x 120mm
Int: 556 x 356 x 107mm
Colour Available: ●
Material: Polypropylene
Pallet Quantity: 75
Dolly: AHDOL-03



LA1173 - SK64175S

Solid - 34 Ltrs
Ext: 600 x 400 x 175mm
Int: 556 x 356 x 162mm
Colour Available: ●
Material: Polypropylene
Pallet Quantity: 50
Dolly: AHDOL-03



LA1178 - SK64175S

Solid - 34 Ltrs
Ext: 600 x 400 x 175mm
Int: 556 x 356 x 162mm
Colour Available: ●
Material: Polypropylene
Pallet Quantity: 50
Dolly: AHDOL-03



LA1175 - SK64175S

Solid - 34 Ltrs
Ext: 600 x 400 x 175mm
Int: 556 x 356 x 162mm
Colour Available: ●
Material: Polypropylene
Pallet Quantity: 50
Dolly: AHDOL-03



LA1172 - SK64175P (With Handholes)

Perforated - 34 Ltrs
Ext: 600 x 400 x 175mm
Int: 556 x 356 x 162mm
Colour Available: ●
Material: Polypropylene
Pallet Quantity: 50
Dolly: AHDOL-03



LA1334 - SK64175P (With Handholes)

Perforated - 34 Ltrs
Ext: 600 x 400 x 175mm
Int: 556 x 356 x 162mm
Colour Available: ●
Material: Polypropylene
Pallet Quantity: 50
Dolly: AHDOL-03



LA1254 - SK64235S

Solid - 46 Ltrs
Ext: 600 x 400 x 235mm
Int: 556 x 356 x 222mm
Colour Available: ●
Material: Polypropylene
Pallet Quantity: 40
Dolly: AHDOL-03



LA1255 - SK64235S

Solid - 46 Ltrs
Ext: 600 x 400 x 235mm
Int: 556 x 356 x 222mm
Colour Available: ●
Material: Polypropylene
Pallet Quantity: 40
Dolly: AHDOL-03



LA1180 - SK64235S

Solid - 46 Ltrs
Ext: 600 x 400 x 235mm
Int: 556 x 356 x 222mm
Colour Available: ●
Material: Polypropylene
Pallet Quantity: 40
Dolly: AHDOL-03



LA1217 - SK64400S (With Handholes)

Solid - 78 Ltrs
Ext: 600 x 400 x 400mm
Int: 556 x 356 x 387mm
Colour Available: ●
Material: Polypropylene
Pallet Quantity: 25
Dolly: AHDOL-03

Euro Stackers



LA1012 - 20002

Solid - 2 Ltrs
Ext: 200 x 150 x 118mm
Int: 165 x 115 x 108mm
Colour Available: ●
Material: Polypropylene
Pallet Quantity: 576
Dolly: NA



LA1013 - 21005

Solid - 5 Ltrs
Ext: 300 x 200 x 118mm
Int: 257 x 159 x 108mm
Colour Available: ●
Material: Polypropylene
Pallet Quantity: 288
Dolly: NA



LA1016 - 21006

Solid - 6 Ltrs
Ext: 400 x 300 x 74mm
Int: 355 x 255 x 64mm
Colour Available: ●
Material: Polypropylene
Pallet Quantity: 300
Dolly: AHDOL-03



LA1025 - 21030

Solid - 30 Ltrs
Ext: 400 x 300 x 319mm
Int: 355 x 255 x 300mm
Colour Available: ●
Material: Polypropylene
Pallet Quantity: 60
Dolly: AHDOL-03



LA1026 - 21008

Solid - 8 Ltrs
Ext: 600 x 400 x 50mm
Int: 555 x 355 x 40mm
Colour Available: ●
Material: Polypropylene
Pallet Quantity: 130
Dolly: AHDOL-03



LA1027 - 21013

Solid - 12 Ltrs
Ext: 600 x 400 x 73mm
Int: 555 x 355 x 62mm
Colour Available: ●
Material: Polypropylene
Pallet Quantity: 125
Dolly: AHDOL-03



LA1028 - 21014

Perforated - 12 Ltrs
Ext: 600 x 400 x 73mm
Int: 555 x 355 x 62mm
Colour Available: ●
Material: Polypropylene
Pallet Quantity: 125
Dolly: AHDOL-03



LA1029 - 20016

Perforated - 20 Ltrs
Ext: 600 x 400 x 120mm
Int: 555 x 358 x 104mm
Colour Available: ●
Material: Polypropylene
Pallet Quantity: 50
Dolly: AHDOL-03



LA1034 - 20028

Solid - 28 Ltrs
Ext: 600 x 400 x 150mm
Int: 555 x 355 x 139mm
Colour Available: ●
Material: Polypropylene
Pallet Quantity: 65
Dolly: AHDOL-03



LA1035 - 20029

Perforated - 28 Ltrs
 Ext: 600 x 400 x 150mm
 Int: 555 x 355 x 139mm
 Colour Available: ●
 Material: Polypropylene
 Pallet Quantity: 65
 Dolly: AHDOL-03



LA1046 - 21054

Solid - 54 Ltrs
 Ext: 600 x 400 x 280mm
 Int: 555 x 355 x 265mm
 Colour Available: ●
 Material: Polypropylene
 Pallet Quantity: 35
 Dolly: AHDOL-03



LA1047 - 21060 (With Handholes)

Solid - 60 Ltrs
 Ext: 600 x 400 x 319mm
 Int: 555 x 355 x 300mm
 Colour Available: ●
 Material: Polypropylene
 Pallet Quantity: 30
 Dolly: AHDOL-03



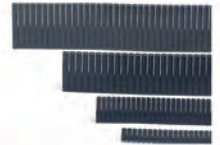
LA1050 - 21064 (With Handholes)

Perforated - 60 Ltrs
 Ext: 600 x 400 x 319mm
 Int: 555 x 355 x 300mm
 Colour Available: ●
 Material: Polypropylene
 Pallet Quantity: 30
 Dolly: AHDOL-03



LA1052 - 20086 (With Handholes)

Perforated Sides/Solid Base - 75 Ltrs
 Ext: 600 x 400 x 412mm
 Int: 555 x 355 x 394mm
 Colour Available: ●
 Material: Polypropylene
 Pallet Quantity: 20
 Dolly: AHDOL-03



DIVIDERS

Details available at request.
 Colour Available: ●



Euro Stackers



LA1053 - 21090 (With Handholes)

Solid - 87 Ltrs
Ext: 800 x 600 x 235mm
Int: 755 x 555 x 205mm
Colour Available: ●
Material: Polypropylene
Pallet Quantity: 20
Dolly: LA1121



LA1071 - 21092 (With Handholes)

Perforated Sides/Solid Base - 87 Ltrs
Ext: 800 x 600 x 235mm
Int: 755 x 555 x 205mm
Colour Available: ●
Material: Polypropylene
Pallet Quantity: 20
Dolly: LA1121



LA1193 - C1578 (With Handholes)

Solid - 125 Ltrs
Ext: 800 x 600 x 319mm
Int: 752 x 555 x 305mm
Colour Available: ●
Material: Polypropylene
Pallet Quantity: 12
Dolly: LA1121



LA1072 - 21136 (With Handholes)

Perforated Sides/Solid Base - 125 Ltrs
Ext: 800 x 600 x 319mm
Int: 755 x 555 x 295mm
Colour Available: ●
Material: Polypropylene
Pallet Quantity: 12
Dolly: LA1121



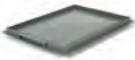
LA1055 - 21162 (With Handholes)

Solid - 162 Ltrs
Ext: 800 x 600 x 412mm
Int: 755 x 555 x 382mm
Colour Available: ●
Material: Polypropylene
Pallet Quantity: 8
Dolly: LA1121



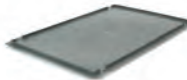
LA1102 - 21163 (With Handholes)

Perforated - 162 Ltrs
Ext: 800 x 600 x 412mm
Int: 755 x 555 x 382mm
Colour Available: ●
Material: Polypropylene
Pallet Quantity: 8
Dolly: LA1121



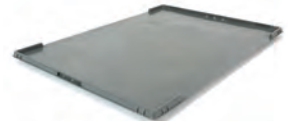
LA1056 - R61020

Solid
Ext: 400 x 300
Colour Available: ●
Material: Polypropylene



LA1057 - SK Lid

Solid
Ext: 600 x 400
Colour Available: ●
Material: Polypropylene



LA1058 - R61087

Solid
Ext: 800 x 600
Colour Available: ●
Material: Polypropylene



LA1171 - SK64075PR

Perforated - 12 Ltrs
 Ext: 600 x 400 x 75mm
 Int: 556 x 356 x 62mm
 Colour Available: ●
 Material: Polypropylene
 Pallet Quantity: 125
 Dolly: AHDOL-03



LA1363 - C1514

Perforated - 23 Ltrs
 Ext: 600 x 400 x 120mm
 Int: 556 x 356 x 107mm
 Colour Available: ●
 Material: Polypropylene
 Pallet Quantity: 75
 Dolly: AHDOL-03



LA1239 - SK64120SR

Solid - 23 Ltrs
 Ext: 600 x 400 x 120mm
 Int: 556 x 356 x 107mm
 Colour Available: ●
 Material: Polypropylene
 Pallet Quantity: 75
 Dolly: AHDOL-03



LA1238 - SK64175SR

Solid - 34 Ltrs
 Ext: 600 x 400 x 175mm
 Int: 556 x 356 x 162mm
 Colour Available: ●
 Material: Polypropylene
 Pallet Quantity: 50
 Dolly: AHDOL-03



LA1237 - SK64235SR

Solid - 46 Ltrs
 Ext: 600 x 400 x 235mm
 Int: 556 x 356 x 222mm
 Colour Available: ●
 Material: Polypropylene
 Pallet Quantity: 40
 Dolly: AHDOL-03



Stackers



ST1010 - AHM104B

Solid - 28.5 Ltrs
 Ext: 640 x 385 x 150mm
 Int: 600 x 340 x 145mm
 Colour Available: ●●●○
 Material: HDPE
 Pallet Quantity: 75
 Dolly: ST1014



ST1012 - AHM104D

Perforated - 28.5 Ltrs
 Ext: 640 x 385 x 150mm
 Int: 600 x 340 x 145mm
 Colour Available: ○
 Material: HDPE
 Pallet Quantity: 75
 Dolly: ST1014



ST1015 - AHM118B

Solid - 38 Ltrs
 Ext: 640 x 385 x 205mm
 Int: 600 x 340 x 200mm
 Colour Available: ●●●○●
 Material: HDPE
 Pallet Quantity: 60
 Dolly: ST1014



ST1017 - AHM118D

Solid with Slots in top - 38 Ltrs
 Ext: 640 x 385 x 205mm
 Int: 600 x 340 x 200mm
 Colour Available:
 Material: HDPE ○
 Pallet Quantity: 60
 Dolly: ST1014



ST1013 - AHM8104

Lid
 Ext: 640 x 385mm
 Colour Available: ●●●○
 Material: MPDE



ST1014 - AHM1104

Suits Stackers 640 x 385mm
 Ext: 650 x 395 x 130mm
 Available in 4 Colours
 Material: MDPE
 Castors: 4 Swivel 100mm Dia castors



LA1257 - Uni Box

Solid - 24 Ltrs
 Ext: 600 x 400 x 145mm
 Int: 537 x 358 x 140mm
 Colour Available: ●
 Material: HDPE
 Pallet Quantity: 65
 Dolly: AP1001
 Lid: LA1266



LA1258 - Uni Box

Solid - 24 Ltrs
 Ext: 600 x 400 x 145mm
 Int: 537 x 358 x 140mm
 Colour Available: ●
 Material: HDPE
 Pallet Quantity: 65
 Dolly: AP1001
 Lid: LA1266



LA1259 - Uni Box

Solid - 24 Ltrs
 Ext: 600 x 400 x 145mm
 Int: 537 x 358 x 140mm
 Colour Available: ○
 Material: HDPE
 Pallet Quantity: 65
 Dolly: AP1001
 Lid: LA1266



LA1260 - Uni Box

Solid - 40 Ltrs
 Ext: 600 x 400 x 225mm
 Int: 537 x 358 x 220mm
 Colour Available: ●
 Material: HDPE
 Pallet Quantity: 45
 Dolly: AP1001
 Lid: LA1266



LA1261 - Uni Box

Solid - 40 Ltrs
 Ext: 600 x 400 x 225mm
 Int: 537 x 358 x 220mm
 Colour Available: ●
 Material: HDPE
 Pallet Quantity: 45
 Dolly: AP1001
 Lid: LA1266



LA1262 - Uni Box

Solid - 40 Ltrs
 Ext: 600 x 400 x 225mm
 Int: 537 x 358 x 220mm
 Colour Available: ○
 Material: HDPE
 Pallet Quantity: 45
 Dolly: AP1001
 Lid: LA1266



LA1263 - Uni Box

Solid - 54 Ltrs
 Ext: 600 x 400 x 300mm
 Int: 537 x 358 x 295mm
 Colour Available: ●
 Material: HDPE
 Pallet Quantity: 30
 Dolly: AP1001
 Lid: LA1266



LA1264 - Uni Box

Solid - 54 Ltrs
 Ext: 600 x 400 x 300mm
 Int: 537 x 358 x 295mm
 Colour Available: ●
 Material: HDPE
 Pallet Quantity: 30
 Dolly: AP1001
 Lid: LA1266



LA1265 - Uni Box

Solid - 54 Ltrs
 Ext: 600 x 400 x 300mm
 Int: 537 x 358 x 295mm
 Colour Available: ○
 Material: HDPE
 Pallet Quantity: 30
 Dolly: AP1001
 Lid: LA1266



Lidded Boxes

Our lidded boxes offer that extra security you need for transporting and storing high-value items safely. Fully-fitted hinged lids stay firmly secured to your boxes during transit, which means no more lost lids or spilled goods. As an extra security measure, we have also fitted our lidded boxes with tamper-evident seals, to deter any interference during distribution.

To further minimise the risk of loss in transit, our lids come equipped with a ticket window, allowing you to apply labels to your boxes securely while keeping them fully visible to couriers.

We also have a range of Dollies which take our Lidded Boxes products.



LA1367 - 10005

Solid - 4 Ltrs
 Ext: 300 x 200 x 130mm
 Int: 245 x 160 x 101mm
 Colour Available: ●
 Material: Polypropylene
 Pallet Quantity: 210
 Dolly: NA



LA1368 - 10010

Solid - 6 Ltrs
 Ext: 300 x 200 x 200mm
 Int: 235 x 152 x 174mm
 Colour Available: ●
 Material: Polypropylene
 Pallet Quantity: 210
 Dolly: NA



LA1369 - 10020

Solid - 20 Ltrs
 Ext: 400 x 300 x 252mm
 Int: 325 x 246 x 222mm
 Colour Available: ●
 Material: Polypropylene
 Pallet Quantity: 72
 Dolly: NA



LA1370 - 10025

Solid - 25 Ltrs
 Ext: 400 x 300 x 320mm
 Int: 321 x 244 x 295mm
 Colour Available: ●
 Material: Polypropylene
 Pallet Quantity: 81
 Dolly: NA



LA1371 - 10040

Solid - 40 Ltrs
 Ext: 600 x 400 x 250mm
 Int: 515 x 343 x 215mm
 Colour Available: ●
 Material: Polypropylene
 Pallet Quantity: 80
 Dolly: AHDOL-03



LA1372 - 1005B

Solid - 54 Ltrs
 Ext: 600 x 400 x 320mm
 Int: 508 x 335 x 285mm
 Colour Available: ●
 Material: Polypropylene
 Pallet Quantity: 60
 Dolly: AHDOL-03



LA1373 - 1006B

Solid - 64 Ltrs
 Ext: 600 x 400 x 365mm
 Int: 501 x 328 x 330mm
 Colour Available: ●
 Material: Polypropylene
 Pallet Quantity: 60
 Dolly: AHDOL-03



LA1374 - 10066

Solid - 67 Ltrs
 Ext: 600 x 400 x 385mm
 Int: 512 x 329 x 355mm
 Colour Available: ●
 Material: Polypropylene
 Pallet Quantity: 60
 Dolly: AHDOL-03



LA1375 - 10083

Solid - 80 Ltrs
 Ext: 710 x 460 x 368mm
 Int: 597 x 374 x 330mm
 Colour Available: ●
 Material: Polypropylene
 Pallet Quantity: 60
 Dolly: AHDOL-03

Lidded Boxes



LA1205 - ALC43222

Solid - 18 Ltrs
Ext: 400 x 300 x 222mm
Int: 338 x 254 x 197mm
Colour Available: ●
Material: Polypropylene
Pallet Quantity: 135
Dolly: NA



LA1292BLU - ALC43264

Solid - 22 Ltrs
Ext: 400 x 300 x 264mm
Int: 334 x 254 x 239mm
Colour Available: ●
Material: Polypropylene
Pallet Quantity: 135
Dolly: NA



LA1104 - ALC43306

Solid - 25 Ltrs
Ext: 400 x 300 x 306mm
Int: 329 x 250 x 282mm
Colour Available: ●
Material: Polypropylene
Pallet Quantity: 135
Dolly: NA



LA1295 - ALC64265

Solid - 48 Ltrs
Ext: 600 x 400 x 265mm
Int: 530 x 353 x 240mm
Colour Available: ●
Material: Polypropylene
Pallet Quantity: 60
Dolly: AHDOL-03



ALC64306

Solid - 54 Ltrs
Ext: 600 x 400 x 306mm
Int: 514 x 350 x 281mm
Colour Available: ●●●●●
Material: Polypropylene
Pallet Quantity: 60
Dolly: AHDOL-03



LA1304 - ALC64365

Solid - 65 Ltrs
Ext: 600 x 400 x 365mm
Int: 508 x 346 x 340mm
Colour Available: ●
Material: Polypropylene
Pallet Quantity: 60
Dolly: AHDOL-03



LA1306 - ALC64400

Solid - 70 Ltrs
Ext: 600 x 400 x 400mm
Int: 521 x 343 x 375mm
Colour Available: ●
Material: Polypropylene
Pallet Quantity: 60
Dolly: AHDOL-03



Rivets

Material: Polypropylene
Details available on request.





LA1292 - ALC43264

Solid - 22 Ltrs
 Ext: 400 x 300 x 264mm
 Int: 334 x 254 x 239mm
 Colour Available: ●
 Material: Polypropylene
 Pallet Quantity: 135
 Dolly: NA



NT1869 - AHAL43310R

Solid - 25 Ltrs
 Ext: 400 x 300 x 310mm
 Int: 332 x 249 x 285mm
 Colour Available: ●
 Material: Polypropylene
 Pallet Quantity: 135
 Dolly: NA



NT1872 - ALAL64250R

Solid - 40 Ltrs
 Ext: 600 x 400 x 250mm
 Int: 533 x 355 x 230mm
 Colour Available: ●
 Material: Polypropylene
 Pallet Quantity: 60
 Dolly: AHDOL-03



LA1303 - ALC64306

Solid - 54 Ltrs
 Ext: 600 x 400 x 306mm
 Int: 514 x 350 x 281mm
 Colour Available: ●
 Material: Polypropylene
 Pallet Quantity: 60
 Dolly: AHDOL-03



LA1305 - ALC64365

Solid - 65 Ltrs
 Ext: 600 x 400 x 365mm
 Int: 508 x 346 x 340mm
 Colour Available: ●
 Material: Polypropylene
 Pallet Quantity: 60
 Dolly: AHDOL-03



NT1798 - AHAL64400R

Solid - 70 Ltrs
 Ext: 600 x 400 x 400mm
 Int: 508 x 343 x 373mm
 Colour Available: ●
 Material: Polypropylene
 Pallet Quantity: 60
 Dolly: AHDOL-03



LA1184 - AT10A804R

Solid - 80 Ltrs
 Ext: 710 x 460 x 368mm
 Int: 597 x 374 x 330mm
 Colour Available: ●
 Material: Polypropylene
 Pallet Quantity: 60
 Dolly: AHDOL-03



Hinged Lidded Containers



LA1059 - 20C10

Solid - 10 Ltrs
Ext: 400 x 300 x 129mm
Int: 355 x 255 x 105mm
Colour Available: ●
Material: Polypropylene
Pallet Quantity: 140
Dolly: NA



LA1060 - 21C27

Solid - 15 Ltrs
Ext: 400 x 300 x 186mm
Int: 355 x 255 x 164mm
Colour Available: ●
Material: Polypropylene
Pallet Quantity: 100
Dolly: NA



LA1061 - 21C20

Solid - 20 Ltrs
Ext: 400 x 300 x 246mm
Int: 355 x 255 x 220mm
Colour Available: ●
Material: Polypropylene
Pallet Quantity: 80
Dolly: NA



LA1062 - 21C30

Solid - 30 Ltrs
Ext: 400 x 300 x 330mm
Int: 355 x 255 x 300mm
Colour Available: ●
Material: Polypropylene
Pallet Quantity: 60
Dolly: NA



LA1063 - 20C28

Solid - 28 Ltrs
Ext: 600 x 400 x 161mm
Int: 555 x 355 x 139mm
Colour Available: ●
Material: Polypropylene
Pallet Quantity: 60
Dolly: AHDOL-03

Hinged Lidded Containers



LA1064 - 21C33

Solid - 33 Ltrs
Ext: 600 x 400 x 186mm
Int: 555 x 355 x 164mm
Colour Available: ●
Material: Polypropylene
Pallet Quantity: 50
Dolly: AHDOL-03

LA1065 - 21C45

Solid - 45 Ltrs
Ext: 600 x 400 x 246mm
Int: 555 x 355 x 220mm
Colour Available: ●
Material: Polypropylene
Pallet Quantity: 40
Dolly: AHDOL-03

LA1066 - 21C54

Solid - 54 Ltrs
Ext: 600 x 400 x 291mm
Int: 555 x 355 x 265mm
Colour Available: ●
Material: Polypropylene
Pallet Quantity: 30
Dolly: AHDOL-03



LA1067 - 20C85

Solid - 75 Ltrs
Ext: 600 x 400 x 423mm
Int: 555 x 355 x 394mm
Colour Available: ●
Material: Polypropylene
Pallet Quantity: 20
Dolly: AHDOL-03





Stack/ Nest

Our stack nest boxes are ideal for making the most of your available space. They stack securely when loaded, thanks to their swing bars and bail arms and nest neatly when empty to help you save extra space on return lorry loads. They are made of robust polypropylene, allowing them to handle heavy or bulky loads both in transit and in storage.

Available in a range of colours and sizes, you can purchase our stack nest swing-bar boxes in both solid and perforated styles.

We also have a range of Dollies which take our Stack Nest products.

Bail Arm Crates



LA1216 - SN431802

Perforated - 15 Ltrs
Ext: 400 x 300 x 180mm
Int: 364 x 264 x 144mm
Colour Available: ●
Material: Polypropylene
Pallet Quantity: 300
Dolly: NA



LA1218 - DH641002

Perforated - 10 / 16 Ltrs
Ext: 600 x 400 x 106mm
Int: 552 x 352 x 50/80mm
Colour Available: ●
Material: Polypropylene
Pallet Quantity: 225
Dolly: AHDOL-03



LA1155 - DH641602

Perforated - 28 Ltrs
Ext: 600 x 400 x 167mm
Int: 552 x 352 x 140mm
Colour Available: ●
Material: Polypropylene
Pallet Quantity: 215
Dolly: AHDOL-03



PL1001BLU

Perforated - 35 Ltrs
Ext: 600 x 400 x 199mm
Int: 546 x 349 x 172mm
Colour Available: ●
Material: Polypropylene
Pallet Quantity: 200
Dolly: AHDOL-03



PL1001GRN

Perforated - 35 Ltrs
Ext: 600 x 400 x 199mm
Int: 546 x 349 x 172mm
Colour Available: ●
Material: Polypropylene
Pallet Quantity: 200
Dolly: AHDOL-03



PL1001RED

Perforated - 35 Ltrs
Ext: 600 x 400 x 199mm
Int: 546 x 349 x 172mm
Colour Available: ●
Material: Polypropylene
Pallet Quantity: 200
Dolly: AHDOL-03



PL1001

Perforated - 35 Ltrs
Ext: 600 x 400 x 199mm
Int: 546 x 349 x 172mm
Colour Available: ●
Material: Polypropylene
Pallet Quantity: 200
Dolly: AHDOL-03



PL1002BLU

Perforated - 44 Ltrs
Ext: 600 x 400 x 253mm
Int: 548 x 352 x 226mm
Colour Available: ●
Material: Polypropylene
Pallet Quantity: 125
Dolly: AHDOL-03



PL1002

Perforated - 44 Ltrs
Ext: 600 x 400 x 253mm
Int: 548 x 352 x 226mm
Colour Available: ●
Material: Polypropylene
Pallet Quantity: 125
Dolly: AHDOL-03

Swing Bar Crates



LA1098 - BA64225P

Perforated - 38 Ltrs
 Ext: 600 x 400 x 225mm
 Int: 525 x 347 x 200mm
 Colour Available: ●
 Material: Polypropylene
 Pallet Quantity: 75
 Dolly: AHDOL-03



LA1092 - BA64225P

Perforated - 38 Ltrs
 Ext: 600 x 400 x 225mm
 Int: 525 x 347 x 200mm
 Colour Available: ●
 Material: Polypropylene
 Pallet Quantity: 75
 Dolly: AHDOL-03



LA1087 - VB64300P

Perforated - 53 Ltrs
 Ext: 600 x 400 x 300mm
 Int: 540 x 344 x 273mm
 Colour Available: ●
 Material: Polypropylene
 Pallet Quantity: 75
 Dolly: AHDOL-03



LA1101BLU - VB64300S

Solid - 53 Ltrs
 Ext: 600 x 400 x 300mm
 Int: 540 x 344 x 273mm
 Colour Available: ●
 Material: Polypropylene
 Pallet Quantity: 75
 Dolly: AHDOL-03



LA1091 - VB64300PR

Perforated - 53 Ltrs
 Ext: 600 x 400 x 300mm
 Int: 540 x 344 x 273mm
 Colour Available: ●
 Material: Polypropylene
 Pallet Quantity: 85
 Dolly: AHDOL-03



LA1101 - VB64300SR

Solid - 53 Ltrs
 Ext: 600 x 400 x 300mm
 Int: 540 x 344 x 273mm
 Colour Available: ●
 Material: Polypropylene
 Pallet Quantity: 75
 Dolly: AHDOL-03



LA1094 - DH74P

Perforated - 28/43 Ltrs
 Ext: 691 x 441 x 194mm
 Int: 635 x 391 x 110/168mm
 Colour Available: ●
 Material: Polypropylene
 Pallet Quantity: 75
 Dolly: PA217





AHSN64200P

Perforated - 32 Ltrs
Ext: 600 x 400 x 200mm
Int: 490 x 332 x 195mm
Colour Available: ● ○ ● ● ● ●
Material: Polypropylene
Pallet Quantity: 160
Dolly: AHDOL-03

AHSN64200S

Solid - 32 Ltrs
Ext: 600 x 400 x 200mm
Int: 490 x 332 x 195mm
Colour Available: ● ○ ● ● ● ● ● ●
Material: Polypropylene
Pallet Quantity: 160
Dolly: AHDOL-03

AHSN64300P

Perforated - 50 Ltrs
Ext: 600 x 400 x 300mm
Int: 490 x 332 x 295mm
Colour Available: ● ○ ● ● ● ● ● ●
Material: Polypropylene
Pallet Quantity: 120
Dolly: AHDOL-03



AHSN64300S

Solid - 50 Ltrs
Ext: 600 x 400 x 300mm
Int: 490 x 332 x 295mm
Colour Available: ● ○ ● ● ● ● ● ●
Material: Polypropylene
Pallet Quantity: 120
Dolly: AHDOL-03

AHSN64400P

Perforated - 70 Ltrs
Ext: 600 x 400 x 400mm
Int: 490 x 332 x 395mm
Colour Available: ● ○ ● ● ● ● ● ●
Material: Polypropylene
Pallet Quantity: 80
Dolly: AHDOL-03

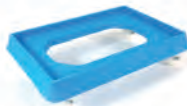
AHSN64400S

Solid - 70 Ltrs
Ext: 600 x 400 x 400mm
Int: 490 x 332 x 395mm
Colour Available: ● ○ ● ● ● ● ● ●
Material: Polypropylene
Pallet Quantity: 80
Dolly: AHDOL-03



AHSN - LID

Ext: 600 x 400
Colour Available: ● ● ● ● ● ●
Material: Polypropylene
Pallet Quantity: 450



AHDOL-03

Suits: 600 x 400 Boxes
Ext: 640 x 440 x 160mm
Colour Available: ● ● ● ● ● ● ● ●
Material: Polypropylene
 4 Swivel 75mm Dia castors



Heavy Duty 180° Stack/Nest



LA1208 - 11018

Solid - 18 Ltrs
 Ext: 600 x 400 x 117mm
 Int: 458 x 338 x 102mm
 Colour Available: ●
 Material: HDPE
 Pallet Quantity: 270
 Dolly: AHDOL-03



LA1209 - 11020

Perforated - 18 Ltrs
 Ext: 600 x 400 x 117mm
 Int: 458 x 338 x 102mm
 Colour Available: ●
 Material: HDPE
 Pallet Quantity: 270
 Dolly: AHDOL-03



LA1224 - 11032

Solid - 32 Ltrs
 Ext: 600 x 400 x 200mm
 Int: 457 x 338 x 177mm
 Colour Available: ●●
 Material: HDPE
 Pallet Quantity: 150
 Dolly: AHDOL-03



LA1153 - 11034

Perforated - 32 Ltrs
 Ext: 600 x 400 x 200mm
 Int: 457 x 338 x 177mm
 Colour Available: ●
 Material: HDPE
 Pallet Quantity: 150
 Dolly: AHDOL-03



LA1144 - 11051

Solid - 50 Ltrs
 Ext: 600 x 400 x 300mm
 Int: 460 x 340 x 270mm
 Colour Available: ●●
 Material: HDPE
 Pallet Quantity: 90
 Dolly: AHDOL-03



LA1188 - 11052

Perforated - 50 Ltrs
 Ext: 600 x 400 x 300mm
 Int: 460 x 340 x 270mm
 Colour Available: ●
 Material: HDPE
 Pallet Quantity: 90
 Dolly: AHDOL-03



LA1165 - 11065

Solid - 70 Ltrs
 Ext: 600 x 400 x 400mm
 Int: 460 x 340 x 370mm
 Colour Available: ●
 Material: HDPE
 Pallet Quantity: 70
 Dolly: AHDOL-03



LA1196 - 11066

Perforated - 70 Ltrs
 Ext: 600 x 400 x 400mm
 Int: 460 x 340 x 370mm
 Colour Available: ●
 Material: HDPE
 Pallet Quantity: 70
 Dolly: AHDOL-03





LP1482 - 50 Ltrs Fish Box

Solid D/H - 50 Ltrs
 Ext: 600 x 500 x 240mm
 Int: 440 x 430 x 210mm
 Colour Available: ●
 Material: HDPE
 Pallet Quantity: 80
 Dolly: NA



DEE0035 - 20 Kgs Fish Box

Solid D/H - 35 Ltrs
 Ext: 800 x 450 x 190mm
 Int: 625 x 380 x 176mm
 Colour Available: ●●
 Material: HDPE
 Pallet Quantity: 90
 Dolly: NA



DEE0060 - 40 Kgs Fish Box

Solid D/H - 60 Ltrs
 Ext: 800 x 450 x 270mm
 Int: 625 x 380 x 260mm
 Colour Available: ●●●
 Material: HDPE
 Pallet Quantity: 60
 Dolly: NA



DEE0074 - 50 Kgs Fish Box

Solid D/H - 74 Ltrs
 Ext: 800 x 465 x 290mm
 Int: 630 x 390 x 285mm
 Colour Available: ●●
 Material: HDPE
 Pallet Quantity: 50
 Dolly: NA



DEE0075 - 50 Kgs Fish Box

Solid D/H - 75 Ltrs
 Ext: 890 x 560 x 236mm
 Int: 690 x 480 x 220mm
 Colour Available: ●●
 Material: HDPE
 Pallet Quantity: 50
 Dolly: NA



ZEV0044 - Fish Basket

Perforated - 44 Ltrs
 Ext: 458 x 375mm
 Colour Available: ●●
 Material: HDPE
 Pallet Quantity: 100



ZEV0058 - Fish Basket

Perforated - 58 Ltrs
 Ext: 530mm x 430mm
 Colour Available: ●
 Material: HDPE
 Pallet Quantity: 100





Bakery

Our plastic trays have been primarily designed to carry confectionery and food items, meaning they are all food-quality assured, they can also be used for a wider range of transport operations. Our plastic trays are durable and adaptable enough to be used in a number of different industries that include food manufacturing, retail and produce.

They are available in a range of colours and sizes in both solid and perforated varieties, so whatever your needs are, you can rest assured that you will find a set of plastic trays to meet them here at Alison Handling.

We also have a range of Dollies which take our Bakery products.



LA1079 - 41042

Perforated - 43 Ltrs
 Ext: 750 x 450 x 165mm
 Int: 724 x 425 x 138mm
 Colour Available: ●
 Material: Polypropylene
 Pallet Quantity: 36
 Dolly: AHDOL-05



LA1080 - 41042

Perforated - 43 Ltrs
 Ext: 750 x 450 x 165mm
 Int: 724 x 425 x 138mm
 Colour Available: ○
 Material: Polypropylene
 Pallet Quantity: 36
 Dolly: AHDOL-05



LA1011 - RB12

Perforated - 65 Ltrs
 Ext: 762 x 508 x 216mm
 Int: 697 x 463 x 190mm
 Colour Available: ●
 Material: Polypropylene
 Pallet Quantity: 54
 Dolly: PK1034



LA1154 - RB12

Perforated - 65 Ltrs
 Ext: 762 x 508 x 216mm
 Int: 697 x 463 x 190mm
 Colour Available: ●
 Material: Polypropylene
 Pallet Quantity: 54
 Dolly: PK1035



LA1010 - GWL15

Perforated - 68 Ltrs
 Ext: 788 x 617 x 190mm
 Int: 723 x 569 x 165mm
 Colour Available: ●
 Material: Polypropylene
 Pallet Quantity: 50
 Dolly: PA211



AHRB DOL

Ext: 780 x 515 x 195mm
 Colour Available: ●●
 Material: Polypropylene
 Pallet Quantity: 30



PA211 - GWDOL

Ext: 822 x 676 x 142mm
 Colour Available: ●
 Material: MDPE
 Pallet Quantity: 30



Confectionery Trays



LA1000 - GWL2

Perforated - 22 Ltrs
Ext: 762 x 457 x 92mm
Int: 715 x 412 x 72mm
Colour Available:
Material: Polypropylene
Pallet Quantity: 66
Dolly: AHDOL05



LA1006 - GWP2

Perforated - 22 Ltrs
Ext: 762 x 457 x 92mm
Int: 715 x 412 x 72mm
Colour Available:
Material: Polypropylene
Pallet Quantity: 66
Dolly: AHDOL05



LA1003 - GWS2

Solid - 22 Ltrs
Ext: 762 x 457 x 92mm
Int: 715 x 412 x 72mm
Colour Available:
Material: Polypropylene
Pallet Quantity: 66
Dolly: AHDOL05



LA1001 - GWL8

Perforated - 32 Ltrs
Ext: 762 x 457 x 123mm
Int: 715 x 412 x 103mm
Colour Available:
Material: Polypropylene
Pallet Quantity: 45
Dolly: AHDOL05



LA1007 - GWP8

Perforated - 32 Ltrs
Ext: 762 x 457 x 123mm
Int: 715 x 412 x 103mm
Colour Available:
Material: Polypropylene
Pallet Quantity: 45
Dolly: AHDOL05



LA1004 - GWS8

Solid - 32 Ltrs
Ext: 762 x 457 x 123mm
Int: 715 x 412 x 103mm
Colour Available:
Material: Polypropylene
Pallet Quantity: 45
Dolly: AHDOL05



LA1002 - GWL6

Perforated - 48 Ltrs
Ext: 762 x 457 x 176mm
Int: 715 x 412 x 156mm
Colour Available:
Material: Polypropylene
Pallet Quantity: 30
Dolly: AHDOL05



LA1008 - GWP6

Perforated - 48 Ltrs
Ext: 762 x 457 x 176mm
Int: 715 x 412 x 156mm
Colour Available:
Material: Polypropylene
Pallet Quantity: 30
Dolly: AHDOL05



LA1005 - GWS6

Solid - 48 Ltrs
Ext: 762 x 457 x 176mm
Int: 715 x 412 x 156mm
Colour Available:
Material: Polypropylene
Pallet Quantity: 30
Dolly: AHDOL05



ST1001 - AHM111B

Solid - 20 Ltrs
Ext: 765 x 455 x 90mm
Int: 735 x 425 x 80mm
Colour Available: ●●●○
Material: Polypropylene
Pallet Quantity: 75
Dolly: AHDOL05



ST1002 - AHM111C

Perforated - 20 Ltrs
Ext: 765 x 455 x 90mm
Int: 735 x 425 x 80mm
Colour Available: ●●●○
Material: HDPE
Pallet Quantity: 75
Dolly: AHDOL05



ST1003 - AHM111D

Perforated - 20 Ltrs
Ext: 765 x 455 x 90mm
Int: 735 x 425 x 80mm
Colour Available: ●●●○
Material: HDPE
Pallet Quantity: 75
Dolly: AHDOL05



ST1006 - AHM211BH

Solid - 30 Ltrs
Ext: 765 x 455 x 125mm
Int: 735 x 425 x 110mm
Colour Available: ●●●○
Material: Polypropylene
Pallet Quantity: 45
Dolly: AHDOL05



ST1004 - AHM211B

Solid - 30 Ltrs
Ext: 765 x 455 x 125mm
Int: 735 x 425 x 110mm
Colour Available: ●●●○
Material: Polypropylene
Pallet Quantity: 45
Dolly: AHDOL05



ST1007 - AHM211DH

Perforated - 30 Ltrs
Ext: 765 x 455 x 125mm
Int: 735 x 425 x 110mm
Colour Available: ●●●○
Material: HDPE
Pallet Quantity: 45
Dolly: AHDOL05



ST1008 - AHM311BH

Solid - 50 Ltrs
Ext: 765 x 455 x 175mm
Int: 735 x 425 x 160mm
Colour Available: ●●●○
Material: Polypropylene
Pallet Quantity: 36
Dolly: AHDOL05



ST1005 - AHM311B

Solid - 50 Ltrs
Ext: 765 x 455 x 175mm
Int: 735 x 425 x 160mm
Colour Available: ●●●○
Material: Polypropylene
Pallet Quantity: 36
Dolly: AHDOL05



ST1009 - AHM311DH

Perforated - 50 Ltrs
Ext: 765 x 455 x 175mm
Int: 735 x 425 x 160mm
Colour Available: ●●●○
Material: HDPE
Pallet Quantity: 36
Dolly: AHDOL05

Ingredients Storage



EX1056 - AHING 07

Solid - 65 Ltrs
Ext: 580 x 295 x 730mm
Int: 560 x 265 x 590mm
Available in 11 colours.
Material: MDPE



EX1057 - AHING 08

Solid - 90 Ltrs
Ext: 580 x 380 x 730mm
Int: 560 x 347 x 590mm
Available in 11 colours.
Material: MDPE



EX1058 - AHING 09

Solid - 140 Ltrs
Ext: 580 x 525 x 730mm
Int: 555 x 497 x 590mm
Available in 11 colours.
Material: MDPE



EX1000 - AHDIS 00

Solid - 8 Ltrs
Ext: 295 x 250 x 400mm
Available in 11 colours.
Material: MDPE



EX1001 - AHDIS 01

Solid - 15 Ltrs
Ext: 250 x 500 x 500mm
Available in 11 colours.
Material: MDPE



EX1002 - AHDIS 02

Solid - 35 Ltrs
Ext: 300 x 640 x 685mm
Available in 11 colours.
Material: MDPE



PA204 - ID21

Solid - 21 Ltrs
Ext: 205 x 474 x 424mm
Available in 11 colours.
Material: MDPE



PA205 - ID61

Solid - 63 Ltrs
Ext: 280 x 616 x 674mm
Available in 11 colours.
Material: MDPE



PA206 - ID90

Solid - 90 Ltrs
Ext: 410 x 600 x 673mm
Available in 11 colours.
Material: MDPE

Inter Stacking/Tapered Bins



EX1004 - AHB0001

Solid - 20 Ltrs
Dia 435 x 180mm
Int: 370 x 170mm
 Available in 11 colours
Material: MDPE
Dolly: EX1011
Lid to fit EX1008



EX1005 - AHB0003

Solid - 35 Ltrs
Dia 435 x 315mm
Int: 370 x 305mm
 Available in 11 colours
Material: MDPE
Dolly: EX1011
Lid to fit EX1008



EX1006 - AHB0005

Solid - 50 Ltrs
Dia 435 x 420mm
Int: 370 x 410mm
 Available in 11 colours
Material: MDPE
Dolly: EX1011
Lid to fit EX1008



EX1007 - AHB0007

Solid - 70 Ltrs
Dia 435 x 650mm
Int: 370 x 640mm
 Available in 11 colours
Material: MDPE
Dolly: EX1011
Lid to fit EX1008



EX1034 - AHTB 20

Solid - 20 Ltrs
Dia 360 x 385mm
Int: 310 x 375mm
 Available in 11 colours
Material: MDPE
Dolly: EX1011
Lid to fit EX1035



EX1036 - AHTB 45

Solid - 45 Ltrs
Dia 480 x 510mm
Int: 400 x 500mm
 Available in 11 colours
Material: MDPE
Dolly: EX1011
Lid to fit EX1037



EX1038 - AHTB 65

Solid - 65 Ltrs
Dia 510 x 590mm
Int: 435 x 580mm
 Available in 11 colours
Material: MDPE
Dolly: EX1011
Lid to fit EX1039



EX1040 - AHTB 110A

Solid - 110 Ltrs
Dia 570 x 680mm
Int: 510 x 660mm
 Available in 11 colours
Material: MDPE
Lid to fit EX1041



EX1044 - AHTB 215

Solid - 215 Ltrs
Dia 700 x 900mm
Int: 610 x 890mm
 Available in 11 colours
Material: MDPE
Lid to fit EX1045

Ingredient Storage Mobiles



AHX338 - Roto Box

Solid - 34 Ltrs
Ext: 480 x 390 x 260mm
Int: 395 x 300 x 225mm
Material: MDPE
Colour Available: ○ ● ● ● ● ●
Lid to fit AHX8338



AH3338 - 3 Box Rack

Fits 3 Boxes
Ext: 500 x 455 x 1230mm
Material: Epoxy coated Mild Steel
 4 Swivel, 75mm nylon casters
 *Also Available in Stainless Steel



AH6338 - 6 Box Rack

Fits 6 Boxes
Ext: 900 x 500 x 1260mm
Material: Epoxy coated Mild Steel
 4 Swivel, 75mm nylon casters
 * Also Available in Stainless Steel



ST1058 - Trough

Solid - 145 Ltrs
Ext: 980 x 580 x 860mm
Int: 900 x 500 x 380mm
Colour Available: ○ ● ● ● ● ●
Material: Mild Steel or Stainless Steel
Body: MDPE
Lid also available



ST1059 - Mobile Trough

Solid - 145 Ltrs
Ext: 980 x 580 x 860mm
Int: 900 x 500 x 380mm
Colour Available: ○ ● ● ● ● ●
Material: Mild Steel or Stainless Steel
Body: MDPE
Lid also available



ST1060 - Trough

Solid - 198Ltrs
Ext: 1160 x 690 x 820mm
Int: 1080 x 600 x 380mm
Colour Available: ○ ● ● ● ● ●
Material: Mild Steel or Stainless Steel
Body: MDPE
Lid also available



ST1061 - Mobile Trough

Solid - 198Ltrs
Ext: 1160 x 690 x 820mm
Int: 1080 x 600 x 380mm
Colour Available: ○ ● ● ● ● ●
Material: Mild Steel or Stainless Steel
Body: MDPE
Lid also available





AH201/5

Trolley to take 5 x 235mm Deep Trays
Ext: 456mm x 614mm x1500mm
Material: Mild Steel Epoxy Powder
Castors: Polypropylene housing & wheel
Load Capacity: 300kg



AH200/8

Trolley to take 8 x 120mm Deep Trays
Ext: 456mm x614mm x1500mm
Material: Mild Steel Epoxy Powder
Castors: Polypropylene housing & wheel
Load Capacity: 300kg



AH201/10

Trolley to take 10 x 235mm Deep Trays
Ext: 887mm x 614mm x 1500mm
Material: Mild Steel Epoxy Powder
Castors: Polypropylene housing & wheel.
Load Capacity: 300kg



AH200/16

Trolley to take 16 x 120mm Deep Trays
Ext: 887mm x 614mm x 1500mm
Material: Mild Steel Epoxy Powder
Castors: Polypropylene housing & wheel
Load Capacity: 300kg



IN1001

Display Rack - 6 Trays upto 228mm High
Ext: 825mm x 1727mm x 457mm
Material: Stainless Steel
Castors: 4 100mm Dia Nylon Swivel Castors



IN1005

Bakery Rack - 8 Trays upto 203mm
Ext: 520mm x 1816mm x 762mm
Material: Stainless Steel
Castors: 4 100mm Dia Nylon Swivel Castors



IN1006

Bakery Rack - 12 Trays upto 136mm High
Ext: 520mm x 1816mm x 762mm
Material: Stainless Steel
Castors: 4 100mm Dia Nylon Swivel Castors



IN1007

Bakery Rack - 16 Trays upto 101mm High
Ext: 520mm x 1816mm x 762mm
Material: Stainless Steel
Castors: 4 100mm Dia Nylon Swivel Castors



Stainless Steel Trays

Please call for more details



Mobles

Great for collecting large quantities of goods while remaining light and mobile, plastic trucks prove useful in all manner of waste scenarios, whether that's collecting empty beer bottles in a small bar or running products around a large waste management facility. Our plastic trucks are made from polyethylene to ensure that they are both robust and easy to clean.

Available in a variety of different sizes and colours, our plastic trucks can help you quickly sort goods with colour-coding. They are ideal for a wide range of sectors, including food processing, pharmaceuticals, laundries, recycling and waste management.



EX1012 - AH16TR

Solid - 72 Ltrs
Ext: 465 x 465 x 510mm
Int: 415 x 415 x 410mm
 Available in 11 colours
Material: MDPE
Castors: 4 Swivel 75mm Dia Castors
Lid to fit EX1013



EX1014 - AH26TR

Solid - 118 Ltrs
Ext: 465 x 465 x 770mm
Int: 415 x 415 x 670mm
 Available in 11 colours
Material: MDPE
Castors: 4 Swivel 75mm Dia Castors
Lid to fit EX1013



EX1015 - AH30TR

Solid - 135 Ltrs
Ext: 615 x 525 x 685mm
Int: 555 x 460 x 580mm
 Available in 11 colours
Material: MDPE
Castors: 4 Swivel 75mm Dia Castors
Lid to fit EX1016



EX1017 - AH45TR

Solid - 200 Ltrs
Ext: 830 x 455 x 760mm
Int: 770 x 395 x 655mm
 Available in 11 colours
Material: MDPE
Castors: 4 Swivel 75mm Dia Castors
Lid to fit EX1018



EX1019 - AH70TR

Solid - 320 Ltrs
Ext: 1100 x 690 x 695mm
Int: 890 x 570 x 560mm
 Available in 11 colours
Material: MDPE
Castors: 2 Fixed & 2 Swivel 100mm Dia Castors
Lid to fit EX1020



EX1021 - AH100TR

Solid - 455 Ltrs
Ext: 1400 X 770 X 785mm
Int: 1240 x 620 x 660mm
 Available in 11 colours
Material: MDPE
Castors: 2 Fixed & 2 Swivel 100mm Dia Castors
Lid to fit EX1022



Recycled Eco Trucks



EX1012R - AH16TR

Solid - 72 Ltrs
Ext: 465 x 465 x 510mm
Int: 415 x 415 x 410mm
Colour Available: ●
Material: MDPE
Castors: 4 Swivel 75mm Dia Castors
Lid to fit EX1013R



EX1014R - AH26TR

Solid - 118 Ltrs
Ext: 465 x 465 x 770mm
Int: 415 x 415 x 670mm
Colour Available: ●
Material: MDPE
Castors: 4 Swivel 75mm Dia Castors
Lid to fit EX1013R



EX1015R - AH30TR

Solid - 135 Ltrs
Ext: 615 x 525 x 685mm
Int: 555 x 460 x 580mm
Colour Available: ●
Material: MDPE
Castors: 4 Swivel 75mm Dia Castors
Lid to fit EX1016R



EX1017R - AH45TR

Solid - 200 Ltrs
Ext: 830 x 455 x 760mm
Int: 770 x 395 x 655mm
Colour Available: ●
Material: MDPE
Castors: 4 Swivel 75mm Dia Castors
Lid to fit EX1018R



EX1019R - AH70TR

Solid - 320 Ltrs
Ext: 1100 x 690 x 695mm
Int: 890 x 570 x 560mm
Colour Available: ●
Material: MDPE
Castors: 2 Fixed & 2 Swivel 100mm Dia Castors
Lid to fit EX1020R



EX1021R - AH100TR

Solid - 455 Ltrs
Ext: 1400 x 770 x 785mm
Int: 1240 x 620 x 660mm
Colour Available: ●
Material: MDPE
Castors: 2 Fixed & 2 Swivel 100mm Dia Castors
Lid to fit EX1020R





EX1023 - AH0111

Solid - 135 Ltrs
Ext: 650 x 460 x 660mm
Int: 600 x 390 x 580mm
 Available in 11 colours
Material: MDPE
Castors: 4 swivel 50mm Dia Castors



EX1024 - AH0113

Solid - 150 Ltrs
Ext: 615 x 455 x 750mm
Int: 555 x 400 x 685mm
 Available in 11 colours
Material: MDPE
Castors: 4 swivel 50mm Dia Castors



EX1025 - AH0115

Solid - 165 Ltrs
Ext: 820 x 455 x 620mm
Int: 780 x 405 x 555mm
 Available in 11 colours
Material: MDPE
Castors: 4 swivel 50mm Dia Castors



EX1026 - AH0119

Solid - 185 Ltrs
Ext: 670 x 615 x 620mm
Int: 610 x 555 x 560mm
 Available in 11 colours
Material: MDPE
Castors: 4 swivel 50mm Dia Castors



EX1027 - AH0118

Solid - 165 Ltrs
Ext: 970 x 380 x 620mm
Int: 910 x 320 x 555mm
 Available in 11 colours
Material: MDPE
Castors: 4 swivel 50mm Dia Castors



PA200 - MT14

Solid - 100 Ltrs
Ext: 584 x 450 x 685mm
Int: 444 x 310 x 584mm
 Available in 11 colours
Material: MDPE
Castors: 2 Fixed & 2 Swivel 75mm Dia Castors



PA202 - MT21

Solid - 145 Ltrs
Ext: 800 x 450 x 685mm
Int: 660 x 310 x 584mm
 Available in 11 colours
Material: MDPE
Castors: 2 Fixed & 2 Swivel 75mm Dia Castors



PK1031 - AHMOB 01

Solid - 305 Ltrs
Ext: 990 x 686 x 762mm
Int: 902 x 597 x 622mm
 Available in 11 colours
Material: MDPE
Castors: 2 Fixed & 2 Swivel 100mm Dia Castors





Dollies

When you need to move goods around the workplace in a way that's both safe and efficient, our plastic dollies offer you an ideal solution. Our range includes both new and used dollies that are designed to suit most plastic storage boxes, including stacking boxes, bread baskets and stacking crates.

We manufacture them from durable polyethylene, which means that all of our new plastic dollies meet the hygiene criteria to be used where food is handled.



NT1086 - Alison A-Link Dolly

NEW

LA1122

Suits: Most 600/400mm boxes
Linkable Dolly
Ext: 630 x 420 x 180mm
Stock Colour: ●
Material: MDPE
Castors: 4 Swivel 100mm Rubber Castors
Handle to fit LA1122

Dolly Handle
Suits: LA1121 & NT1086
Ext: 1300 x 350 x 300mm
Colour Available: ●
Material: MDPE



Dollies



AHDOL-06

Suits: 600 x 400 Boxes
 Ext: 620 x 420 x 170mm
 Colour Available: ●
 Material: MDPE
 Castors: 4 Swivel 100mm Dia Rubber Castors



AHDOL-06

Suits: 600 x 400 Boxes
 Ext: 620 x 420 x 170mm
 Colour Available: ●
 Material: MDPE
 Castors: 4 Swivel 100mm Dia Rubber Castors



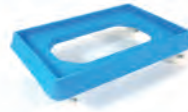
AHDOL-03

Suits: 600 x 400 Boxes
 Ext: 640 x 440 x 160mm
 Colour Available: ●●●●●
 Material: MDPE
 Castors: 4 Swivel 75mm Dia castors



AHDOL-03

Suits: 600 x 400 Boxes
 Ext: 640 x 440 x 160mm
 Colour Available: ●●●●●
 Material: MDPE
 Castors: 4 Swivel 75mm Dia castors



AHDOL-03

Suits: 600 x 400 Boxes
 Ext: 640 x 440 x 160mm
 Colour Available: ●●●●●
 Material: MDPE
 Castors: 4 Swivel 75mm Dia castors



AHDOL-05

Suits: Confectionery Trays
 Ext: 860 x 550 x 200mm
 Colour Available: ●
 Material: MDPE
 Castors: 4 Swivel 100mm Dia castors



AHDOL-05

Suits: Confectionery Trays
 Ext: 860 x 550 x 200mm
 Colour Available: ●
 Material: MDPE
 Castors: 4 Swivel 100mm Dia castors



AHRB DOL

Suits: LA1011/LA1154
 Ext: 780 x 515 x 195mm
 Colour Available: ●
 Material: MDPE
 Castors: 4 Swivel 100mm Dia castors



AHRB DOL

Suits: LA1011/LA1154
 Ext: 780 x 515 x 195mm
 Colour Available: ●
 Material: MDPE
 Castors: 4 Swivel 100mm Dia castors



GWDOL - PT15

Suits: LA1010
Ext: 822 x 676 x 142mm
Colour Available: ●
Material: MDPE
Castors: 4 Swivel 75mm Dia castors



LA1121 - DO795904

Suits: Two of 600 x 400 Boxes or one of 800 x 600 Box
Ext: 800 x 600 x 171mm
Colour Available: ●
Material: MDPE
Castors: 2 Fixed & 2 Swivel 100mm Dia castors
Handle to fit: LA1122



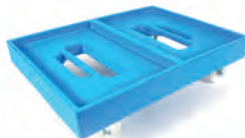
AHDOL -07

Suits: Two of 600 x 400 Boxes
Ext: 800 x 600 x 252mm
Colour Available: ●
Material: MDPE
Castors: 2 Fixed & 2 Swivel 100mm Dia castors



AHDOL-08

Suits: Two of 600 x 400 Boxes
Ext: 800 x 600 x 252mm
Colour Available: ●
Material: MDPE
Castors: 2 Fixed & 2 Swivel 100m Dia castors



AHDOL-08

Suits: Two of 600 x 400 Boxes
Ext: 800 x 600 x 252mm
Colour Available: ●
Material: MDPE
Castors: 2 Fixed & 2 Swivel 100m Dia castors



74SDOL - PA217

Suits: LA1094
Ext: 680 x 436 x 200mm
 Available in 7 Colours
Material: MDPE
Castors: 4 Swivel 100mm Dia Castors



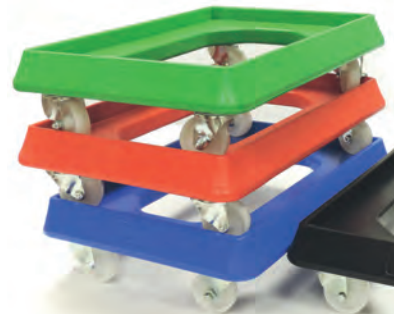
EX1011 - AHM001X

Suits: Intersatcking Bins
Ext: 440 x 440 x 178mm
 Available in 7 Colours
Material: MDPE
Castors: 4 Swivel 75mm Dia castors



ST1014 - AHM1104

Suits: Stackers 640 x 385mm
Ext: 650 x 395 x 130mm
 Available in 4 Colours
Material: MDPE
Castors: 4 Swivel 100mm Dia castors





Pallet Boxes

When it comes to moving heavy or bulky items, our heavy-duty plastic pallet boxes and Dolav boxes quite literally deliver the goods. We make our pallet boxes from hard-wearing polyethylene, ensuring they are robust enough to handle any pressure put upon them during transit again and again. Plus, every pallet box we supply is fitted with runners or pallet feet for easy transportation.

Available in a selection of sizes and designs — including solid and ventilated styles — our pallet boxes have a smooth design that makes them incredibly easy to clean. They are also food-quality certified, making them ideal for food manufacturers and caterers.



Dolav 800 Solid

Solid - 500 Ltrs
Ext: 1200 x 800 x 740mm
Int: 1120 x 720 x 600mm
 2 Runners
Colour Available: ● ● ● ● ●
Material: HDPE
Weight Load: 700kg
Stacking Load: 4000kg



Dolav 800 Perf

Perf - 500 Ltrs
Ext: 1200 x 800 x 740mm
Int: 1120 x 720 x 600mm
 2 Runners
Colour Available: ● ● ● ● ●
Material: HDPE
Weight Load: 700kg
Stacking Load: 4000kg



Dolav 800 Lid

Solid
Ext: 1225 x 825 x 80mm
Colour Available: ●
Material: HDPE



Dolav Ace Solid

Solid - 605 Ltrs
Ext: 1200 x 1000 x 740mm
Int: 1128 x 928 x 585mm
 3 Runners
Colour Available: ● ● ● ● ●
Material: HDPE
Weight Load: 1200kg
Stacking Load: 5000kg



Dolav Ace Perf

Perf - 605 Ltrs
Ext: 1200 x 1000 x 740mm
Int: 1128 x 928 x 585mm
 3 Runners
Colour Available: ● ● ● ● ●
Material: HDPE
Weight Load: 1200kg
Stacking Load: 5000kg



Dolav Ace Lid

Solid
Ext: 1230 x 1040 x 80mm
Colour Available: ○ ●
Material: HDPE



AHPB Pallet Box



CR1041 - AHBP1

Solid - 470 Ltrs
Ext: 1200 x 800 x 740mm
Int: 1090 x 690 x 595mm
Colour Available: ●●●●●●
Material: HDPE
3 Runners
Weight Load: 1200 kg



CR1041LID

Solid
Ext: 1230 x 829 x 63mm
Colour Available: ●
Material: HDPE
Lid to fit AHBP1



CR1034 - AHBP3

Solid - 610 Ltrs
Ext: 1200 x 1000 x 740mm
Int: 1125 x 925 x 600mm
Colour Available: ●●●●●●
Material: HDPE
3 Runners
Weight Load: 1200 kg



CR1034LID

Solid
Ext: 1232 x 1028 x 63mm
Colour Available: ●
Material: HDPE
Lid to fit AHBP3



*Please note these products fully interwork with Dolav boxes.



LA1309

Solid - 610 Ltrs
 Ext: 1200 x 1000 x 760mm
 Int: 1108 x 908 x 600mm
 Colour Available: ● ● ● ● ●
 Material: HDPE
 3 Runners
 Weight Load: 450kg



LA1320

Perforated - 610 Ltrs
 Ext: 1200 x 1000 x 760mm
 Int: 1108 x 908 x 600mm
 Colour Available: ●
 Material: HDPE
 3 Runners
 Weight Load: 450kg



LA1346 - Drop Door

Solid - 620 Ltrs
 Ext: 1200 x 1000 x 760mm
 Int: 1108 x 908 x 610mm
 Colour Available: ●
 Material: HDPE
 4 Feet
 Weight Load: 450kg



NT792 - Mega Box

Solid - 1120 Ltrs
 Ext: 1200 x 1000 x 1200mm
 Int: 1127 x 927 x 1044mm
 Colour Available: ●
 Material: HDPE
 3 Runners
 Weight Load: 450 kg



NT1695BLU

Solid - 1400 Ltrs
 Ext: 1300 x 1150 x 1250mm
 Int: 1150 x 990 x 1090mm
 Colour Available: ●
 Material: HDPE
 3 Runners
 Weight Load: 1000 kg
 Lid sold separately



LA1134 - GB725004

Solid - 260 Ltrs
 Ext: 1000 x 600 x 662mm
 Int: 929 x 544 x 519mm
 Colour Available: ●
 Material: HDPE
 2 Runners
 Weight Load: 225 kg



Folding Pallet Boxes



FLC1210 - 2 Drop Doors

Solid - 855 Ltrs
Ext: 1200 x 1000 x 1000mm
Int: 1117 x 918 x 865mm
Colour Available: ●
Material: HDPE
3 Runners
Weight Load: 800 kg
Stacking Load: 3000 kg



NT2246

Solid - 600 Ltrs
Ext: 1200 x 1000 x 740mm
Int: 1120 x 920 x 578mm
Colour Available: ●
Material: HDPE
3 Runners
Weight Load: 750kg
Stacking Load: 3750kg
Fully interworks with a DolavBox
Perforated version available on request



Bulk Handling Equipment



HT3 - Tipper

Dolav - 1000 Kgs
 Tip Height Fixed at 1050mm
 Tip Angle: Upto 110 degrees
 Function: Tilt, Decant, Tip
 Power: Mains or Battery
 Mounting: Mobile or static
 Availability: Built to order



HT4 - Tipper

Dolav - 1500 Kgs
 Tip Height Fixed at 1350mm
 Tip Angle: Upto 125 degrees
 Function: Tipping
 Power: Mains or Battery
 Mounting: Mobile or static
 Availability: Built to order



HA400 - Tilter

Dolav - 1000 Kgs
 Tip Height Fixed at 936mm
 Tip Angle: Fixed at 85 degrees
 Function: Tilting
 Power: Battery
 Mounting: Mobile
 Availability: Usually stocked



WS3000 - Weigh Scales

Dolav - 1000 Kgs
 Function: Weighing
 Power: Mains
 Mounting: Free standing
 Availability: Built to order



HA300 - Wash Frame

Dolav - 100 Kgs
 Tip Angle: Upto 100 degrees
 Function: Wash frame
 Power: Pneumatic
 Mounting: Free standing
 Availability: Built to order





Insulated Boxes

Keep produce fresh with our fantastic selection of Saeplast insulated containers. Saeplast is the premium choice for those in food processing sectors - particularly in seafood, meat production and waste management - who need hard-wearing insulated containers.

Made from the highest quality, environmentally friendly material and available in a variety of sizes, Saeplast containers make food transportation easy and safe. Next day delivery is available on request, perfect if you need insulated tubs in a hurry.



SAE0070

Solid - 70 Ltrs
Ext: 750 x 500 x 340mm
Int: 660 x 390 x 290mm
Colour Available: ●
Material: PUR
 Lid Included



SAE0220

Solid - 220 Ltrs
Ext: 980 x 590 x 570mm
Int: 880 x 490 x 520mm
Colour Available: ●
Material: PUR
 Lid Included



SAE0310

Solid - 304 Ltrs
Ext: 910 x 710 x 710mm
Int: 850 x 640 x 570mm
Colour Available: ●
Material: PUR
 Lid to fit SAE0310LD (Sold separately)



SAE0380

Solid - 365 Ltrs
Ext: 950 x 750 x 750mm
Int: 880 x 680 x 610mm
Colour Available: ●
Material: PUR
 Lid to fit SAE0380LD (Sold separately)



SAE0460

Solid - 448 Ltrs
Ext: 1230 x 1030 x 580mm
Int: 1140 x 940 x 400mm
Colour Available: ●
Material: PUR
 Lid to fit SAE0460LD (Sold separately)



DPLUGS

Replacement Plugs

PUR Benefits

Good thermal properties to ensure steady product temperature
 The use of PUR lids with the containers further improves the temperature retention
 The one-piece seamless design and smooth walls improves hygiene control
 Double walled SAEPLAST containers are strong and durable

PE Benefits

Extremely durable and robust
 SAEPLAST PE containers last up to 6 - 10 times longer than plastic single wall options
 The one-piece seamless triple wall design improves hygiene control
 Safer during handling transport
 Easy to clean, saving both water and sewerage costs





SAE0650

Solid - 603 Ltrs
 Ext: 1200 x 1000 x 760mm
 Int: 1100 x 910 x 570mm
 Colour Available: ●●●●●●●●
 Material: PE
 Lid to fit SAE0650LD (Sold seperately)

SAE0630

Solid - 630 Ltrs
 Ext: 1200 x 1000 x 780mm
 Int: 1100 x 910 x 600mm
 Colour Available: ●●●●●●●●
 Material: PE
 Lid to fit SAE0630LD (Sold seperately)

RSTRAPS

Replacement Straps



SAE0660

Solid - 631 Ltrs
 Ext: 1230 x 1030 x 750mm
 Int: 1140 x 940 x 580mm
 Colour Available: ●●●●●●●●
 Material: PUR/PE
 Lid to fit SAE0660LD (Sold seperately)

SAE0705

Solid - 650 Ltrs
 Ext: 1110 x 1110 x 890mm
 Int: 1010 x 1010 x 690mm
 Colour Available: ●
 Material: PUR
 No lid available



SAE1000

Solid - 1000 Ltrs
 Ext: 1470 x 1180 x 890mm
 Int: 1350 x 1060 x 710mm
 Colour Available: ●●●●●●●●
 Material: PUR/PE
 Lid to fit SAE1000LD (Sold seperately)

SAE1400

Solid - 1280 Ltrs
 Ext: 1990 x 1170 x 870mm
 Int: 1850 x 1020 x 620mm
 Colour Available: ●
 Material: PUR
 Lid to fit SAE1400LD (Sold seperately)



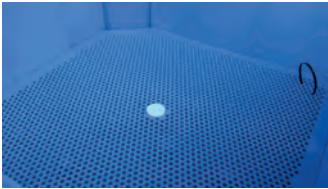


SAEPLAST405

Solid - 412 Ltrs
Ext: 1130 x 1130 x 580mm
Int: 1030 x 1030 x 410mm
Colour Available: ●
Material: PUR
Weight: 40 Kgs

SAEPLAST705

Solid - 650 Ltrs
Ext: 1130 x 1130 x 890mm
Int: 1030 x 1030 x 690mm
Colour Available: ●
Material: PUR
Weight: 64 Kgs



Bottom grid separator with removable plug that secures the grid to the bottom of the box. Keeps the grid in place for dumping.

Optimally designed corners facilitate ease of water flow from container to container.

The Sæplast 405 & 705 wet storage containers stack perfectly together.



Document window for easy traceability. Optional RFID Tag is available.

Eight reinforcement points molded into the base for extra durability. Two drain plugs allow for 100% emptying the container in case of power failure.

New type drain plug, tighten and releasable by hand, no tools needed.

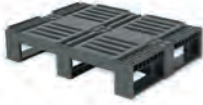


Pallets

Plastic pallets offer a host of advantages over the traditional wooden variety. They are far easier to clean than wooden pallets, making them hygienic enough to be suitable for food storage. Better still, our plastic pallets are also safer to handle, you can say goodbye to rogue splinters and nails.

All the plastic pallets we sell are health and safety compliant and incredibly durable because we make them from high-density polyethylene. They can support the huge weights demanded of them when you need to transport goods in bulk around.

Light & Medium Duty Pallets



CR1009 - CR2

Perforated
 Ext: 800 x 600 x 160mm
 Colour Available: ●
 Material: HDPE
 Static Load: 2000 Kgs
 Dynamic Load: 500 Kgs
 *Not suitable for racking



AP1009 - LP1208

Perforated - Nestable
 Ext: 1200 x 800 x 150mm
 Colour Available: ●
 Material: HDPE
 Static Load: 1000 Kgs
 Dynamic Load: 800 Kgs
 *Not suitable for racking



CR1028GRY - H1

Perforated - 3 Runners
 Ext: 1200 x 800 x 160mm
 Colour Available: ●
 Material: HDPE
 Static Load: 5000 Kgs
 Dynamic Load: 1250 Kgs
 Racking Load: 1000 Kgs



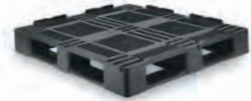
AP1002 - LP1210

Perforated - Nestable
 Ext: 1200 x 1000 x 150mm
 Colour Available: ●
 Material: HDPE
 Static Load: 1000 Kgs
 Dynamic Load: 800 Kgs
 *Not suitable for racking



AP1003 - MP1210

Perforated - 3 Runners
 Ext: 1200 x 1000 x 152mm
 Colour Available: ●
 Material: HDPE
 Static Load: 2000 Kgs
 Dynamic Load: 1000 Kgs
 *Not suitable for racking



CR1004 - D3-5R

Perforated - Full Perimeter Base
 Ext: 1200 x 1000 x 150mm
 Colour Available: ●
 Material: HDPE
 Static Load: 5000 Kgs
 Dynamic Load: 1500 Kgs
 Racking Load: 1250 Kgs



Heavy Duty Pallets



SF1210BLU

Solid - 3 Runners
 Ext: 1200 x 1000 x 160mm
 Colour Available: ●
 Material: HDPE
 Static Load: 5000 Kgs
 Dynamic Load: 1500 Kgs
 Racking Load: 1000 Kgs



SF1210GREY

Solid - 3 Runners
 Ext: 1200 x 1000 x 160mm
 Colour Available: ●
 Material: HDPE
 Static Load: 5000 Kgs
 Dynamic Load: 1500 Kgs
 Racking Load: 1000 Kgs



SF1210RED

Solid - 3 Runners
 Ext: 1200 x 1000 x 160mm
 Colour Available: ●
 Material: HDPE
 Static Load: 5000 Kgs
 Dynamic Load: 1500 Kgs
 Racking Load: 1000 Kgs



CR1001 - CR3-5

Perforated - Full Perimeter Base
 Ext: 1200 x 1000 x 160mm
 Colour Available: ●
 Material: HDPE
 Static Load: 5000 Kgs
 Dynamic Load: 1250 Kgs
 Racking Load: 1000 Kgs
 *Anti Slip Deck



CR1001R - CR3-3R

Perforated - 3 Runners
 Ext: 1200 x 1000 x 160mm
 Colour Available: ●
 Material: HDPE
 Static Load: 5000 Kgs
 Dynamic Load: 1250 Kgs
 Racking Load: 1000 Kgs
 *Anti Slip Deck



CR1003 - TC3-3

Solid - 3 Runners
 Ext: 1200 x 1000 x 160mm
 Colour Available: ●●
 Material: HDPE
 Static Load: 7500 Kgs
 Dynamic Load: 1500 Kgs
 Racking Load: 1250 Kgs



Rotationally Moulded Pallets



ST1037 - R800L

Solid deck - 9 Feet + Rim

Ext: 1200 x 800 x 175mm

Colour Available: ●●●●●●○

Material: MDPE

Static Load: 1000 Kgs

Dynamic Load: 1000 Kgs

Not suitable for racking



HRT - Pallet

Solid Deck Pallet on 9 ft

Ext: 950 x 950 x 200mm

Colour Available: ●

Material: MDPE

Static Load: 600 Kgs

Dynamic Load: 400 Kgs

Not suitable for racking



ST1036 - R1000L

Solid deck - 9 Feet + Rim

Ext: 1200 x 1000 x 175mm

Colour Available: ●●●●●●○

Material: MDPE

Static Load: 1000 Kgs

Dynamic Load: 1000 Kgs

Not suitable for racking





Environmental

Alison Handling supply wheelie bins and environmental products in a variety of colours to suit both domestic and commercial applications. Easy clean, heavy duty polyethylene wheelie bins and spill products come in a choice of colours.



JN1003 - Spill Tray

Solid - 20 Ltrs
Ext: 600 x 400 x 155mm
Colour Available: ● ●
Material: MDPE



JN1004 - Spill Tray

Solid - 30 Ltrs
Ext: 805 x 405 x 155mm
Colour Available: ● ●
Material: MDPE



JN1005 - Spill Tray

Solid - 40 Ltrs
Ext: 800 x 600 x 155mm
Colour Available: ● ●
Material: MDPE



JN1006 - Spill Tray

Solid - 60 Ltrs
Ext: 1000 x 600 x 175mm
Colour Available: ● ●
Material: MDPE



JN1007 - Spill Tray

Solid - 100 Ltrs
Ext: 1200 x 800 x 175mm
Colour Available: ● ●
Material: MDPE



JN1000 - 2 Drum Spill Pallet

Solid - 250 Ltrs
Ext: 1300 x 750 x 440mm
Colour Available: ● ●
Material: MDPE



JN1001 - 4 Drum Spill Pallet

Solid - 250 Ltrs
Ext: 1380 x 1290 x 280mm
Colour Available: ● ●
Material: MDPE



JN1002 - Drum Rack Base

Solid - 450 Ltrs
Ext: 1375 x 1350 x 635mm
Colour Available: ● ●
Material: MDPE



JN1008 - Drum Rack

Solid
Ext: 1375 x 940 x 390mm
Colour Available: ● ●
Material: MDPE

Wheelie Bins



80 Ltr Wheelie Bin

Solid - 2 Wheels
 Ext: 445 x 525 x 930mm
 Colour Available: ● ● ● ● ● ● ● ●
 Material: HDPE



120 Ltr Wheelie Bin

Solid - 2 Wheels
 Ext: 480 x 555 x 930mm
 Colour Available: ● ● ● ● ● ● ● ●
 Material: HDPE



140 Ltr Wheelie Bin

Solid - 2 Wheels
 Ext: 480 x 555 x 1070mm
 Colour Available: ● ● ● ● ● ● ● ●
 Material: HDPE



240 Ltr Wheelie Bin

Solid - 2 Wheels
 Ext: 580 x 740 x 1070mm
 Colour Available: ● ● ● ● ● ● ● ●
 Material: HDPE



660 Ltr Wheelie Bin

Solid - 4 Wheels
 Ext: 1350 x 1200 x 770mm
 Colour Available: ● ● ● ● ● ● ● ●
 Material: HDPE



770 Ltr Wheelie Bin

Solid - 4 Wheels
 Ext: 1360 x 1350 x 770mm
 Colour Available: ● ● ● ● ● ● ● ●
 Material: HDPE



1100 Ltr Wheelie Bin Flat top

Solid - 4 Wheels
 Ext: 1360 x 1080 x 1350mm
 Colour Available: ● ● ● ● ● ● ● ●
 Material: HDPE



1100 Ltr Wheelie Bin Roll Top

Solid - 4 Wheels
 Ext: 1300 x 1080 x 1350mm
 Colour Available: ● ● ● ● ● ● ● ●
 Material: HDPE





Wall Mounted Ashtray

Solid
 Ext: 285 x 85 x 350mm
 Material: Zintec Steel Epoxy Coated
 *Supplied with 2 Keys and Fixing kit



Delta Pyramid Ash Tower

16 Ltrs
 Ext: 186 x 200 x 985mm
 Material: Zintec Steel Epoxy Coated
 *Supplied with 2 Keys



Classic Litter Bin

105 Ltrs
 Ext: 570 x 1070mm
 Colour Available: ●
 *Supplied with 2 Keys - 2 Pannels for personalised labels



Free Standing Monarch Bin

144 Ltrs
 Ext: 500 x 810mm
 Colour Available: ●●●●●
 Material: HDPE
 Also 85 Ltr version Available



Octaplus Maxi Bin

140 Ltrs
 Ext: 445 x 1025mm
 Colour Available: ●●●●●
 Material: HDPE
 Also 895 Ltr & 150 Ltr version Available



Areana Enviro

95 Ltrs
 Ext: 536 x 466 x 816mm
 Base Colour: ●
 Lid Colour: ●●●●●
 Material: HDPE



EX1046 - GB1

Solid - 200 Ltrs
 Ext: 720 x 750 x 710mm
 Material: MDPE
 Fitted with: 1 Hasp & Clasp



EX1047 - GB2

Solid - 400 Ltrs
 Ext: 1260 x 750 x 710mm
 Material: MDPE
 Fitted with: 2 Hasp & Clasp





Parts Bins

Alison Handling holds in stock a range of open fronted, rectangular parts bins which are ideal for storing small components such as nuts and bolts, in workshops and factories. Parts bins afford easy access to the contents even when stacked with the products remaining visible and label holders allow for clear labelling.

They also have the versatility to be wall fixed, or to be free standing. Supplied in packs in a variety of colours, sizes and depths, polypropylene plastic parts containers are commonly used in the electronic and engineering industries, as well as in fast food outlets and hospitals.



TC1

Ext: 90 x 100 x 50mm
Int: 80 x 88 x 42mm
Pack Quantity: 20
Colour Available: ●●●●
Material: Polypropylene
Pallet Quantity: 100 packs of 20



TC2

Ext: 165 x 100 x 75mm
Int: 154 x 88 x 63mm
Pack Quantity: 20
Colour Available: ●●●●
Material: Polypropylene
Pallet Quantity: 90 packs of 20



TC3

Ext: 240 x 150 x 132mm
Int: 223 x 128 x 120mm
Pack Quantity: 10
Colour Available: ●●●●
Material: Polypropylene
Pallet Quantity: 54 pack of 10



TC4

Ext: 350 x 205 x 132mm
Int: 330 x 179 x 117mm
Pack Quantity: 10
Colour Available: ●●●●
Material: Polypropylene
Pallet Quantity: 25 packs of 10



TC5

Ext: 350 x 205 x 182mm
Int: 330 x 177 x 167mm
Pack Quantity: 10
Colour Available: ●●●●
Material: Polypropylene
Pallet Quantity: 20 packs of 10



TC6

Ext: 375 x 450 x 182mm
Int: 350 x 378 x 164mm
Pack Quantity: 5
Colour Available: ●●●●
Material: Polypropylene
Pallet Quantity: 20 packs of 5



TC7

Ext: 520 x 310 x 200mm
Int: 470 x 270 x 188mm
Pack Quantity: 5
Colour Available: ●●●●
Material: Polypropylene
Pallet Quantity: 16 packs of 5



Recycled Parts Bins



TC2

Ext: 165 x 100 x 75mm
Int: 154 x 88 x 63mm
Pack Quantity: 20
Colour Available: ●
Material: Polypropylene
Pallet Quantity: 90 packs of 20



TC3

Ext: 240 x 150 x 132mm
Int: 223 x 128 x 120mm
Pack Quantity: 10
Colour Available: ●
Material: Polypropylene
Pallet Quantity: 54 pack of 10



TC4

Ext: 350 x 205 x 132mm
Int: 330 x 179 x 117mm
Pack Quantity: 10
Colour Available: ●
Material: Polypropylene
Pallet Quantity: 25 packs of 10



TC5

Ext: 350 x 205 x 182mm
Int: 330 x 177 x 167mm
Pack Quantity: 10
Colour Available: ●
Material: Polypropylene
Pallet Quantity: 20 packs of 10



TC6

Ext: 375 x 450 x 182mm
Int: 350 x 378 x 164mm
Pack Quantity: 5
Colour Available: ●
Material: Polypropylene
Pallet Quantity: 20 packs of 5



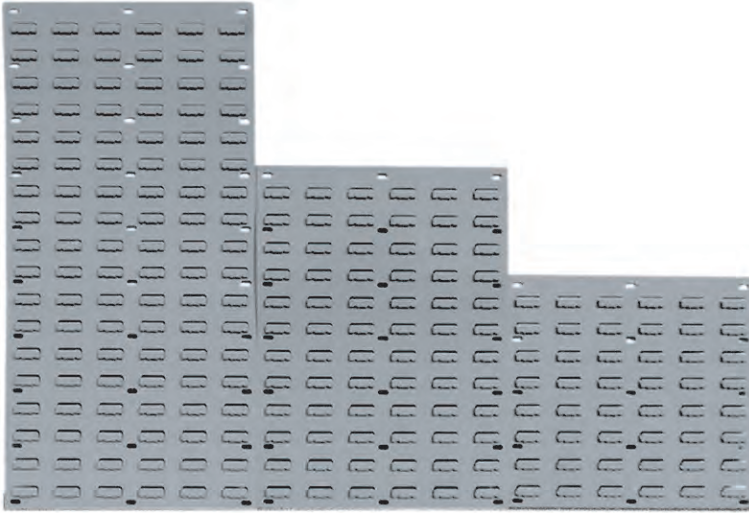
TC7

Ext: 520 x 310 x 200mm
Int: 470 x 270 x 188mm
Pack Quantity: 5
Colour Available: ●
Material: Polypropylene
Pallet Quantity: 16 packs of 5



Louvred Panels

Alison Handling Louvred Panels are designed to hold Storage bins / Picking bins / Topstore Containers. Our Louvred panels can be used in multiples to cover large areas, our Louvred panels will accommodate most brands of Storage bins. Please contact our Sales Team to discuss your requirements in full.



Product Code	Number of Louvres	Pack Quantity	Panel Dimensions
TP1	48 Louvres	Pack of 2	457 x 438mm
TP10	72 Louvres	Pack of 2	457 x 641mm
TP2	108 Louvres	Pack of 2	457 x 946mm
TP5	96 Louvres	Pack of 2	914 x 438mm
TP6	216 Louvres	Single	914 x 946mm



Mobile Louvre Panels

Please call our sales team with your requirements.



Free Standing Louvre Panels

Please call our sales team with your requirements.



Plastic Shelving & Lockers

Help keep your workplace tidy and belongings safe with our excellent selection of metal lockers. Whether you are looking for school lockers or storage lockers for hospitals, factories or warehouses, you are sure to find exactly what you need right here.

Our range includes single and multiple compartment lockers and robust industrial cabinets – great for keeping work tools and office consumables locked away. We also have COSHH regulated cabinets, so you can keep hazardous items safe and secure.

Tables/Racks/Benches



Static Perpartion Table - PT106

Ext: 1000 x 660 x 920mm
Worktop: White Food grade 20mm thick
Colour Available: Duck Egg Blue, with Grey Endcaps.



Mobile Perpartion Table - PT8E

Ext: 993 x 660 x 960mm
Fits: Eight of 600 x 400 x 120mm Stackers
Worktop: White Food grade 20mm thick
Colour Available: Duck Egg Blue, with Grey Endcaps.
Castors: 4 Swivel Rubber 125mm braked castors



Static Perpartion Table - PT2061-2

Ext: 2000 x 600 x 920mm
Worktop: White Food grade 20mm thick
Colour Available: Duck Egg Blue, with Grey Endcaps.



Euro Container Trolley - PCT4E235

Ext: 540 X 660 X 1330mm
Fits: Four of 600 x 400 x 235mm Stackers
Colour Available: Duck Egg Blue, with Red Endcaps.
Castors: 4 Rubber 125mm braked Castors



Euro Container Trolley - PCT10E75

Ext: 540 X 660 X 1500mm
Fits: Twelve of 600 x 400 x 75mm Stackers
Colour Available: Duck Egg Blue, with Grey Endcaps.
Castors: 4 Rubber 125mm braked Castors



Bakery Tray Trolley - PCT8B125

Ext: 600 X 830 X 1470mm
Fits: Eight of 765 x 455 x 90 or 125mm Trays
Colour Available: Duck Egg Blue, with Grey Endcaps.
Castors: 4 Rubber 125mm braked Castors



Bench Seat - BS200

Ext: 2000 x 400 x 450mm
Fitted with: Five length bars for comfort
Colour Available: Duck Egg Blue, with Grey Endcaps.



Single Side Bench Seat - WB200S

Ext: 2000 x 570 x 1800mm
Fitted with: Six length bars for comfort
Includes: Eight plastic coat hooks
Colour Available: Duck Egg Blue, with Grey Endcaps.



Double Side Bench Seat - WB200D

Ext: 2000 x 850 x 1800mm
Fitted with: Nine length bars for comfort
Includes: Eight plastic coat hooks
Colour Available: Duck Egg Blue, with Grey Endcaps.

Plastic Racking

	Depth of Shelf 400mm Number of Shelves Per Bay			Depth of Shelf 500mm Number of Shelves Per Bay			Depth of Shelf 600mm Number of Shelves Per Bay			Overall Length (mm)
	3	4	5	3	4	5	3	4	5	
Product Ref	PRS1043	PRS1044	PRS1045	PRS1053	PRS1054	PRS1055	PRS1063	PRS1064	PRS1065	1000
Product Ref	PRS1243	PRS1244	PRS1245	PRS1253	PRS1254	PRS1255	PRS1263	PRS1264	PRS1265	1200
Product Ref	PRS1543	PRS1544	PRS1545	PRS1553	PRS1554	PRS1555	PRS1563	PRS1564	PRS1565	1500
Product Ref	PRS2043	PRS2044	PRS2045	PRS2053	PRS2054	PRS2055	PRS2063	PRS2064	PRS2065	2000
Overall Height	1050mm	1450mm	1850mm	1050mm	1450mm	1850mm	1050mm	1450mm	1850mm	





1 Door Locker

Ext: 305 x 305 x 1780mm

Colours Available:

Material: Steel - Epoxy coated

Supplied with Two keys per lock



2 Door Locker

Ext: 305 x 305 x 1780mm

Colours Available:

Material: Steel - Epoxy coated

Supplied with Two keys per lock



3 Door Locker

Ext: 305 x 305 x 1780mm

Colours Available:

Material: Steel - Epoxy coated

Supplied with Two keys per lock



4 Door Locker

Ext: 305 x 305 x 1780mm

Colours Available:

Material: Steel - Epoxy coated

Supplied with Two keys per lock



5 Door Locker

Ext: 305 x 305 x 1780mm

Colours Available:

Material: Steel - Epoxy coated

Supplied with Two keys per lock



6 Door Locker

Ext: 305 x 305 x 1780mm

Colours Available:

Material: Steel - Epoxy coated

Supplied with Two keys per lock



8 Door Locker

Ext: 305 x 305 x 1780mm

Colours Available:

Material: Steel - Epoxy coated

Supplied with Two keys per lock



16 Door Locker

Ext: 305 x 305 x 1780mm

Colours Available:

Material: Steel - Epoxy coated

Supplied with Two keys per lock



Wardrobes & Cupboards



Wardrobe Locker

Ext: 915 x 460 x 1780mm

Colours Available: ●●●●●●●●

Material: Steel - Epoxy coated

Supplied with Two keys per lock



Two Person Locker

Ext: 460 x 460 x 1780mm

Colours Available: ●●●●●●●●

Material: Steel - Epoxy coated

Supplied with Two keys per lock



Clean / Dirty Locker

Ext: 460 x 460 x 1780mm

Colours Available: ●●●●●●●●

Material: Steel - Epoxy coated

Supplied with Two keys per lock



PPE Cabinet

Ext: 915 x 460 x 1780mm

Colours Available: ●●●●●●●●

Material: Steel - Epoxy coated

Supplied with Two keys per lock



20 Door Locker

Ext: 380 x 900 x 940mm

Colours Available: ●●●●●●●●

Material: Steel - Epoxy coated

Supplied with Two keys per lock



Low Cupboard

Ext: 915 x 460 x 1015mm

Colours Available: ●●●●●●●●

Material: Steel - Epoxy coated

Supplied with Two keys per lock



Tool Cupboard

Ext: 460 x 460 x 890mm

Colours Available: ●●●●●●●●

Material: Steel - Epoxy coated

Supplied with Two keys per lock



Standard Cupboard

Ext: 915 x 460 x 1780mm

Colours Available: ●●●●●●●●

Material: Steel - Epoxy coated

Supplied with Two keys per lock



12 Compartment Cupboard

Ext: 915 x 460 x 1780mm

Colours Available: ●●●●●●●●

Material: Steel - Epoxy coated

Supplied with Two keys per lock

Hazard Cupboards



Acid Cabinet Small

Ext: 460 x 460 x 890mm
 Colours Available: ○
 Material: Steel - Epoxy coated
 Supplied with Two keys per lock



Acid Cabinet Low

Ext: 915 x 460 x 1015mm
 Colours Available: ○
 Material: Steel - Epoxy coated
 Supplied with Two keys per lock



Standard Acid Cabinet

Ext: 915 x 460 x 1780mm
 Colours Available: ○
 Material: Steel - Epoxy coated
 Supplied with Two keys per lock



Standard COSHH Cabinet

Ext: 915 x 460 x 1780mm
 Colours Available: ●
 Material: Steel - Epoxy coated
 Supplied with Two keys per lock



Medical Cabinet Standard

Ext: 915 x 460 x 1780mm
 Colours Available: ○
 Material: Steel - Epoxy coated
 Supplied with Two keys per lock



Hazardous Cabinet Small

Ext: 915 x 460 x 890mm
 Colours Available: ●●
 Material: Steel - Epoxy coated
 Supplied with Two keys per lock



Hazardous Cabinet Low

Ext: 915 x 460 x 1015mm
 Colours Available: ●●
 Material: Steel - Epoxy coated
 Supplied with Two keys per lock



Hazardous Cabinet 8 Compartmet

Ext: 915 x 460 x 1780mm
 Colours Available: ●●
 Material: Steel - Epoxy coated
 Supplied with Two keys per lock



Hazardous Cabinet Standard

Ext: 915 x 460 x 1780mm
 Colours Available: ●●
 Material: Steel - Epoxy coated
 Supplied with Two keys per lock



Metal Work

Make light work of moving heavy goods with our hard wearing range of metal roll containers and trolleys. Discover our selection of steel platform trucks, including nestable stack trolleys and zinc plated platform trucks – perfect if you are on a budget.

We also have flat, looped and traditional tubular handtrucks. If you are shopping for larger roll cages, take a look at our foldable pallets and 3 sided, 4 sided and full security roll cages. We offer fast, prompt delivery and no minimum spend is required on any order.



PT1000

Three Sided Roll infill Rollcage
Ext: 850 x 735 x 1690mm
Int Height: 1425mm
Material: Bright Zinc Plate
Load Capacity: 600 Kgs



PT1001

Four Sided Roll infill Rollcage
Ext: 850 x 735 x 1690mm
Int Height: 1425mm
Material: Bright Zinc Plate
Load Capacity: 600 Kgs



PT1024

Four Sided Roll Mesh infill Plastic base
Ext: 850 x 735 x 1690mm
Int Height: 1450mm
Material: Bright Zinc Plate
Load Capacity: 600 Kgs



PT1002

Full Security Roll Cage Mesh infill
Ext: 850 x 735 x 1690mm
Int Height: 1425mm
Material: Bright Zinc Plate
Load Capacity: 600 Kgs



PT1025

Three Sided Jumbo Roll Cage
Ext: 1200 x 800 x 1820mm
Int Height: 1650mm
Material: Bright Zinc Plate
Load Capacity: 500 Kgs



PT1023

Four Sided Jumbo Rollcage
Ext: 1200 x 800 x 1820mm
Int Height: 1650mm
Material: Bright Zinc Plate
Load Capacity: 500 Kgs



PT1013

Roll cage Shelf
Material: Bright Zinc Plate
 *All size available to suit the above



Hypacages



PT1019 - Half Euro Hypacage

Capacity: 350 Kgs
Ext: 800 x 600 x 670mm
Int Height: 540mm
Folded Height: 280mm
Material: Bright Zinc Plate
1 Drop door on long Side



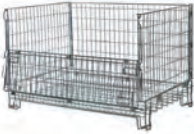
PT1020 - Euro Hypacage

Capacity: 600 Kgs
Ext: 1200 x 800 x 1000mm
Int Height: 850mm
Folded Height: 280mm
Material: Bright Zinc Plate
1 Drop door on long Side



PT1003 - Standard Hypacage

Capacity: 600 Kgs
Ext: 1200 x 1000 x 1000mm
Int Height: 850mm
Folded Height: 280mm
Material: Bright Zinc Plate
1 Drop door on long Side



PT1021 - Jumbo Hypacage

Capacity: 600 Kgs
Ext: 1500 x 1000 x 1000mm
Int Height: 850mm
Folded Height: 280mm
Material: Bright Zinc Plate
1 Drop door on long Side



PT1022 - Heavy Duty Hypacage

Capacity: 1200 Kgs
Ext: 1000 x 800 x 880mm
Int Height: 700mm
Folded Height: 280mm
Material: Bright Zinc Plate
1 Drop door on long Side - With 2 Fork Guides





AH353

Raised Dolly for Interstacking Bins
Ext: 1050 x 400 x 950mm
Ring Diameter 400 x 150mm
Material: Epoxy coated Mild Steel
Castors: 2 Fixed, 2 Swivel castors
Weight Loading: 250 Kgs



AH404

Ingredients Dolly
Ext: 1400 x 540 x 460mm
Material: Zinc plated steel tube
Castors: 4 Swivel, 100mm nylon castors



AHU100 - Euro Dolly

Ext: 600 x 400 x 120mm
Suits: most 600 x 400 boxes
Material: Mild Steel Epoxy coated
Castors: 4 Swivel, 100mm nylon castors



AHU108

Large Euro Dolly
Ext: 830 x 630 x 155mm
Suits: most 800 x 600 boxes
Colours Available: ●
Material: Mild Steel Epoxy coated
Castors: 4 Swivel, 100mm nylon castors



AH211

Bakery Tray Dolly
Ext: 790 x 480 x 140mm
Fits: most 762 x 455 Trays
Material: Mild Steel Epoxy coated
Castors: 4 Swivel, 75mm nylon castors



Stainless Steel Dolly

We can manufacture these to suit your boxes. Please call our sales team for more information.



Platform Trucks



HC1004

Pressed Steel Platform truck
Ext: 915 x 615 x 930mm
Material: Mild Steel
Castors: 2 Fixed and 2 Swivel 220mm Tyres
Load Capacity: 300 Kgs
 Foldable Handle



HC1006

Slientmaster Platform Truck
Ext: 900 x 600 x 980mm
Material: Mild Steel/Plastic
Castors: 2 Fixed and 2 Swivel 125mm Castors
 Foldable handle



HC319842

Steel Platform Truck
Ext: 740 x 480 x 820mm
Material: Pressed Steel
Castors: 2 Fixed and 2 Swivel 125mm Castors
 Foldable Handle



PT1006

Nestable Stock Trolley
Ext: 900 x 550 x 940mm
Material: Tubular Steel
Castors: 2 Fixed and 2 Swivel 125mm Castors
Load Capacity: 320 Kgs
 Foldable Shelf



PT1007

Platform Truck
Ext: 1065 x 525 x 935mm
Material: Tubular Steel
Castors: 2 Fixed and 2 Swivel 125mm Castors
 Wire basket at back



PT1005

Platform Truck
Ext: 1495 x 730 x 920mm
Material: Tubular Steel
Castors: 2 Fixed and 2 Swivel 150mm Castors
 Wire basket at back



HC354877

General Purpose Sacktruck
Ext: 1280 x 470 x 470mm
Material: Steel - Epoxy Coated Finish
Castors: 2 Fixed 200mm Tyres & 2 125mm swivel Castors
 Folds out to make platform truck



HC1007

Flat foot Iron Handtruck
Ext: 1257 x 600 x 500mm
Material: Steel - Epoxy Coated Finish
Castors: 2 Fixed 260mm Tyre
Weight Capacity: 200 Kgs



HC1000

Traditional Handtruck
Ext: 1280 x 470 x 470mm
Material: Steel - Epoxy Coated Finish
Castors: 2 200mm Tyres Foldable
Weight Capacity: 200 Kgs



EX1074 - 1 Step

Solid - 5 Kgs
Ext: 490 x 310 x 300mm
Material: Medium Density Polythylene
 Availavble in 11 colours
Load Bearing: 260 Kgs



EX1075 - 2 Step

Solid - 10 Kgs
Ext: 500 x 545 x 415mm
Material: Medium Density Polythylene
 Availavble in 11 colours
Load Bearing: 260 Kgs



EX1076 - 3 Step

Solid - 15 Kgs
Ext: 500 x 790 x 620mm
Material: Medium Density Polythylene
 Availavble in 11 colours
Load Bearing: 260 Kgs



EX1077 - 4 Step

Solid - 20 Kgs
Ext: 490 x 1070 x 820mm
Material: Medium Density Polythylene
 Availavble in 11 colours
Load Bearing: 260 Kgs



EX1077HAND - 4 Step with Handle

Solid - 25Kgs
Ext: 490 x 1070 x 1620mm
Material: Medium Density Polythylene
 Availavble in 11 colours
Load Bearing: 260 Kgs
 Handle in yellow only



ABS	Temperature Range	Chemical Resistance	Moisture Resistance
Acrylonitrile - Butadiene - Styrene. Thermoplastic. Very rigid and strong with good impact strength.	-20°C to +60°C	Inert to many Chemicals	Very good
PC - Polycarbonate			
Thermoplastic. Very rigid and strong with good impact resistance. Transparent options available. Well suited to higher temperatures.	-40°C to +120°C	Inert to many Chemicals	Good
LDPE - Polyethylene			
Low Density - Thermoplastic. Tough, light and resilient with good impact strength and recovery from distortion. Available in several grades.	-10°C to +60°C	Inert to many Chemicals (see below)	Extremely good
MPDE - Polyethylene			
A tough, slightly less flexible linear medium density. Thermoplastic with good impact strength and recovery from distortion. Suitable for wide temperature use.	-30°C to +80°C	Inert to many Chemicals (see below)	Extremely good
PP - Polypropylene			
Thermoplastic. Similar properties to high density Polyethylene. Better suited to high temperatures and has a harder surface.	-10°C to +100°C	Inert to many Chemicals (see below)	Extremely good
Superplas			
a thermoplastic material having excellent resistance to abrasion, good impact strength yet light in weight.	-10°C to +100°C	Inert to many Chemicals	Extremely good
HIS - High Impact Styrene			
Thermoplastic. Similar properties to high density Polyethylene. Better suited to high temperatures and has a harder surface.	-40°C to +70°C	Inert to many Chemicals (see below)	Very good

Chemical Resistance: Guide

S - Satisfactory resistance
A - Some attack or absorption

U - Unsatisfactory resistance
E - Environmental stress cracking hazard

Chemical	Concentration	Polypropylene	Medium/High Density Polyethylene	Chemical	Concentration	Polypropylene	Medium/High Density Polyethylene
Acetic Acid	10	S	E E	Isopropyl Alcohol	-	S S	E E
	60	S	E AE	Lactic Acid	10	S S	S S
	Glacial	S	E AE		100	S S	E E
Acetic Anhydride	-	S	S A	Lubricating Oil	-	S AE	S AE
Acetone	100	S	AE AE	Maleic Acid	25	S S	E E
Alcohol Ethyl	-	S	S U	Milk	-	S S	S S
Alcohol Isopropyl	-	S	S S	Nitric Acid	5	S S	S S
Alcohol Methyl	100	S	S S		10	S S	S S
Ammonia	0.88 SG So	S	S S		25	S S	S S
	Dry Gas	S	S S		50	A U	A U
	Liquid	S	S S	Oxalic Acid	50	S U	S A
Ammonium Fluoride	-	S	S S	Paraffin	-	S UE	S AE
Ammonium Hydroxide	-	S	S S	Phosphoric Acid	50	S S	S S
Ammonium Nitrate	-	S	S S	Potassium Chloride	-	S S	S S
Amyl Acetate	A	A	AE AE	Potassium Fluoride	-	S S	S S
Amyl Chloride	-	U	U U	Potassium Hydroxide	1	S S	S S
Aniline	-	S	AE AE		10	S A	S S
Animal Oils	-	S	AE AE		Conc.	S A	S S
Antimony Trichloride	-	S	S S		-	A A	S S
Barium Hydroxide	-	S	S S	Salicylic Acid	-	S S	S S
Benzoic Acid	-	S	S S	Silver Nitrate	1	S S	S S
Boric Acid	-	S	S S	Sodium Hydroxide	10	S S	S S
Brine	-	S	S S		40	S S	S S
Calcium Hydroxide	-	S	S S		Conc.	S S	S S
Calcium Hypochlorite	-	S	S S		15Cl	S S	S S
Camphor Oil	-	UE	UE UE	Sodium Hypochlorite	-	S A	S A
Carbon Dioxide	-	S	S S	Stannous Chloride	-	S S	S S
Castor Oil	-	S	U U	Starch	60	S S	S S
Copper Fluoride	Sat. Soln.	S	S S	Sulphuric Acid	70	S S	S S
Detergents Synthetic	All concs	E	E E		98	S S	S S
Dextrose	-	S	S S		10	E U	A U
Fatty Acids	-	S	E AE	Sulphurous Acid	30	S S	S S
Ferric Chloride	-	S	S S		-	U U	U U
Fluosilicic Acid	-	S	S S	Tannic Acid	-	S S	S S
Formaldehyde	40 W/W	S	S A	Tartaric Acid	-	S S	S S
Formic Acid	3	S	S S	Tetra-Ethyl Lead	-	S S	S S
Fruit Pulp Juices	-	S	S S	Turpentine	-	U U	AE UE
Glycerine	-	S	S S	Vegetable Oils	-	S U	E AE
Hydrochloric Acid	10	S	S S	Vinegar	-	S S	S S
	22	S	S S	Water	Distilled	S S	S S
	Conc.	S	S S		-	S S	S S
Hydrofluoric Acid	4	S	S S	White Spirit	-	A U	E AE
	40	S	S S	Zinc Chloride	-	S S	S S
	60	U	S A	Zinc Sulphate	-	S S	S S
	75	U	U U				
	Conc.	U	S A				

General Chemical Resistance of Polycarbonate at Room Temperature

Chemical Class	Lexan Polycarbonate	Chemical Class	Lexan Polycarbonate
Acids, Inorganic		Foodstuffs	S
- Weak	S	Glycols	S
- Strong	S	- Polyglycols	S
- Strong oxidizing	A	- Polyglycol ethers	S
Acids, Organic		Hydrocarbons	
- Weak	S	- Aliphatic	U
- Strong	S	- Aromatic	U
Alcohols	S	- Chlorinated	U
Aldehydes	S	Ketones	U
Amines		Oils	
- Aliphatic	U	- Essential oils	U
- Aromatic	U	- Vegetable oils	S
Bases	S	Pharmaceuticals	S
Beverages	S		
Condiments	U		

The information in the chemical resistance tables above is given as a first guidance.

If a chemical is not listed or if there is uncertainty about chemical resistance please contact us for advice. It is also emphasised that the properties of plastic containers can be affected by use at temperatures other than ambient.

If you are in any doubt please contact us on our helpline.

Telephone: 01772 687 940 Email: enquiries@alisonhandling.com

Conversion Formulae

To Convert	Multiply by
Inches to Centimetres	2.54
Centimetres to Inches	0.3937
Feet to Metres	0.3048
Metres to Feet	3.2808
Yards to Metres	0.9144
Metres to Yards	1.09361
Miles to Kilometres	1.60934
Kilometres to Miles	0.621371
Sq Inches to Sq Centimetres	6.4516
Sq Centimetres to Sq Inches	0.155
Sq Metres to Sq Feet	10.7639
Sq Feet to Sq Metres	0.092903
Sq Yards to Sq Metres	0.83613
Sq Metres to Sq Yards	1.19599
Sq Miles to Sq Kilometres	2.58999
Sq Kilometres to Sq Miles	0.386102
Acres to Hectares	0.40469
Hectares to Acres	2.47105
Cu inches to Cu Centimetres	16.3871

To Convert	Multiply by
Cu Centimetres to Cu Inches	0.06102
Cu Metres to Cu Feet	0.02832
Cu Feet to Cu Metres	35.3147
Cu Yards to Cu Metres	0.7646
Cu Metres to Cu Yards	1.308
Cu Inches to Litres	0.0639
Litres to Cu Inches	11.0237
Gallons to Litres	4.546
Litres to Gallons	0.22
Grains to Grams	0.0648
Grams to Grains	15.43
Ounces to Grams	28.3495
Grams to Ounces	0.03527
Pounds to Grams	453.592
Grams to Pounds	0.0022
Pounds to Kilograms	0.4536
Kilograms to Pounds	2.2046
Tons to Kilograms	1016.05
Kilograms to Tons	0.0009842

Disclaimer

Whilst every effort has been made to ensure product specifications, (including capacities and dimensions) are correct, they are given for guidance only. Where a specification is critical, customers are advised to check with our sales team on 01772 687940. Alison reserve the right to change specifications and prices without prior notice.



STAY AHEAD WITH

THE UK'S LARGEST INDEPENDENT STOCKIST
OF NEW, REUSABLE AND RECYCLABLE PLASTIC
BOXES, TRAYS, PALLETS AND PALLET BOXES



Andrea House
Freckleton Road
Kirkham
Lancashire
PR4 3RB

01772 687 940

enquiries@alisonhandling.com
www.alisonhandling.com

